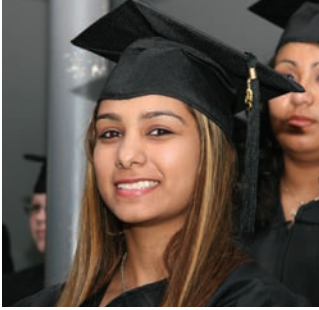
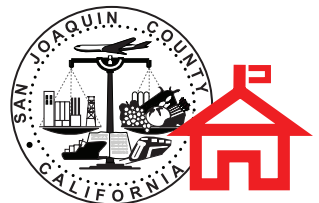


San Joaquin County Public Schools Directory 2005-2006



Courtesy of ...



S J C O E

For additional copies of this directory, please visit
[http:// www.sjcoe.org](http://www.sjcoe.org) to download and print copies free of charge.

Please Note: All information in this directory was submitted by
individual districts and is considered accurate as of
September 2005.

This Directory was compiled and prepared for
publication by San Joaquin County Office of Education
Public Information Office.

For additional copies of this directory, please visit
[http:// www.sjcoe.org](http://www.sjcoe.org) to download and print copies free of charge.

Please Note: All information in this directory was submitted by
individual districts and is considered accurate as of
September 2005.

This Directory was compiled and prepared for
publication by San Joaquin County Office of Education
Public Information Office.



**A message from Fredrick A. Wentworth,
San Joaquin County Superintendent of Schools**

The popularity of this Public Schools Directory is a testament to the deep support our community shows education. Each year, nearly 6,000 directories are distributed to school sites, parents, business owners, government officials, and other members of the community. The ability to contact schools and administrators is key to developing new links and partnerships.

San Joaquin County is home to more than 135,000 students spread among 15 school districts. As our population grows, so do the challenges our educators face. Overcrowding, funding, safety, test scores, and teacher recruitment are hurdles which are overcome by our schools every day.

SJCOE and each of the county's 15 districts provide support for teachers and administrators who are in the classroom everyday. It is the partnerships formed with local parents, businesses, and others that allow our schools to truly shine.

I hope you find the San Joaquin County Public Schools Directory, 2005-2006, to be helpful in making connections to your local schools.

A handwritten signature in cursive script, appearing to read "Fredrick A. Wentworth".

Fredrick A. Wentworth
San Joaquin County Superintendent of Schools

Education Service Center

Conference Rooms

- County Operated Schools & Programs
- Education Services
- Migrant Education
- Multilingual Education
- Special Education/SELPA
- Alpine
- Barwood 1, 2, & Auditorium
- Chartrville 1, 2 & Auditorium
- Greenwood 1, 2, 3, 4, & 5
- Kingston

Education Service Center (ESC) 2707

Parking

Entrance

Parking

Community School

warehouse 2721

Venture Academy 2829

Parking

Entrance

- Venture Academy**
- Classrooms
- Baxler
 - Emerson
 - Fair Oaks
 - Garden
 - Moore
 - Mossdale
 - Schneider
 - Stockton High School
 - Telegraph
 - Wildwood

PDC 2857

warehouse 2911

- Professional Development Center**
- Computer Labs
 - Instructional Technology
 - Science & TOPS
 - Teacher Development

Giannecchini Lane



San Joaquin County Office of Education
 Frederick A. Wentworth
 Superintendent

Transworld Drive

Parking SJCOC

Entrance

- Conference Rooms**
- Locke 1, 2, & Auditorium
 - Board Room

Nelson Center

2814 Transworld Drive

Parking

P4
P3
P2
P1

- Administration
- Business Services
- CEDR
- Human Resources
- Information Technology
- Operations

Nelson Center 2901

Parking

Entrance

Qantas Lane

U.S. Post Office

Highway 99

Stockton

Mantecsa

Arch Airport Road



San Joaquin County Office of Education
Meeting Rooms

Gaylord Nelson Center Information: **468-9241**

Locke 1	Board Room
Locke 2	Locke Auditorium

Professional Development Center Information: **468-4883**

Delphi	Open Forum
--------	------------

<u>Computer Labs</u>		Information: 468-4883
Weber	Independent	
Enterprise	Burbank	

<u>Classrooms</u>		Information: 468-4859
Summer Home	Everett	Fairchild
Salem	Castle	Brunswick
River	Bellota	Four Tree
Atlanta	Lafayette	

Venture Academy Information: **468-5940**

<u>Classrooms</u>		
Bixler	Moore	Wildwood
Emerson	Mossdale	
Fair Oaks	Stockton H.S.	
Garden	Telegraph	

Education Service Center Information: **468-9241**

Burwood 1	Chartville Auditorium
Burwood 2	Greenwood 1
Burwood Auditorium	Greenwood 2
Alpine	Greenwood 3
Kingston	Greenwood 4
Chartville 1	Greenwood 5
Chartville 2	

Contents

San Joaquin County Office of Education

County Board of Education	5
Office of the Superintendent	5
Center for Educational Development and Research	5
Human Resources	6
Business Services	6
Data Processing JPA	8
Student Programs and Services	8
County Operated Schools and Programs	8
Alternative Education Programs	9
Educational Services	10
Special Education Division	15

California School Boards Association	16
---	-----------

Parent Teacher Student Association	16
---	-----------

Professional Associations	16
--	-----------

San Joaquin County School Boards Association	18
---	-----------

San Joaquin County School Districts

Banta Elementary	19
Escalon Unified	19
Holt Union Elementary	20
Jefferson Elementary	21
Lammersville Elementary	21
Lincoln Unified	22
Linden Unified	24
Lodi Unified	25
Manteca Unified	32
New Hope Elementary	37
New Jerusalem Elementary	37
Oak View Union Elementary	37
Ripon Unified	37
San Joaquin Delta Community College	39
Stockton Unified	40
Tracy Unified	47

Charter Schools	50
------------------------------	-----------

Indexes

Schools	52
Personnel	58

San Joaquin County Office of Education

P.O. Box 213030, Stockton 95213-9030
(209) 468-4800
www.sjcoe.org

COUNTY BOARD OF EDUCATION

	<u>Term Expires</u>
Beverly Foster, Area Three, President	2008
Mark Thiel, Area Two, Vice-President	2006
George Abrahamson, Area Five	2006
Anthony J. Gutierrez, Area Four.....	2008
Gretchen Talley, Area One	2006

The County Board of Education meets the third Wednesday
of every month, at 2901 Arch-Airport Road, Stockton.

OFFICE OF THE SUPERINTENDENT

Nelson Center • 2901 Arch-Airport Road • FAX: 468-4975

Fredrick A. Wentworth, County Superintendent	468-4802
Janai Stanton, Executive Assistant to the Superintendent	468-9151
(jstanton@sjcoe.net)	
Mick Founts, Deputy Superintendent, Student Programs and Services	468-9033
James C. Thomas, Deputy Superintendent, Business Services	468-4807
Gary Dei Rossi, Assistant Superintendent, Educational Services.....	468-9027
Jackie Flowers, Assistant Superintendent, County Operated Schools and Programs.....	468-9107
Sandee Kludt, Assistant Superintendent, Special Education	468-4925
Legal Services	468-4850
STRS Counselors	468-4864

Center for Educational Development and Research

Phone (209) 468-5914 • FAX: 468-9235

Rick Cornish, Director (rcornish@sjcoe.net).....	468-5924
Johnny Arguelles, Assistant Director (jarguelles@sjcoe.net).....	468-5926
Mike Thomasson, Senior Programmer (mthomasson@sjcoe.net).....	468-5924

HUMAN RESOURCES

FAX: 468-9226

Lynn Sutton, Director II (lsutton@sjcoe.net).....	468-4820
Karen DePrater, Director I (kdeprater@sjcoe.net)	468-4851
Audrey Castellanos, Manager (acastellanos@sjcoe.net)	468-5952
Aggie Christensen, Manager (achristensen@sjcoe.net)	468-9039
 Employment Opportunities	
Job Hotline.....	468-4981
Internal Job Opportunities - http://www.sjcoe.org	
Statewide Job Opportunities - http://www.ed-join.org	
Livescan Fingerprinting	468-9145
Industrial Accident/Injuries.....	468-9039
SubFinder (http://subfinder@sjcoe.net).....	468-4970

BUSINESS SERVICES

Nelson Center • 2901 Arch-Airport Road

Financial Services FAX: 468-9244
Payroll Services FAX: 468-9147
Operations/Support Services FAX: 468-9102

James C. Thomas, Deputy Superintendent (jthomas@sjcoe.net)	468-4807
Linda Monegan, Executive Assistant (lmonegan@sjcoe.net)	468-4807
General Information.....	468-4830

County Office Business Services

Greg Clark, Director, Operations/Support Services (gclark@sjcoe.net).....	468-9061
Educational Foundation	
Karyn Dexter, Director, County Office Business Services (kdexter@sjcoe.net).....	468-4824
Jerry Springer, Director, Information Technology (jspringer@sjcoe.net).....	468-4869
Kelly Grossman, Coordinator, County Office & District Payroll Services (kgrossman@sjcoe.net).....	468-4835
Janell Morris, Supervisor, Payroll - County Office (jmorris@sjcoe.net)	468-9205
Marrietta Oregon, Supervisor, Central Payroll - Districts (moregon@sjcoe.net).....	468-4838
Kelly Tate, Manager, County Office Budget Services (ktate@sjcoe.net).....	468-4827

Mike White, Manager, Construction & Facility Development (miwhite@sjcoe.net).....	468-9122
Barbara Winder, Manager, County Office Accounting Services (bwinder@sjcoe.net).....	468-4828

School District Business Services

KT Yorba, Director, District Business Services (kyorba@sjcoe.net)	468-4830
Jeri Blote, Manager, District Fiscal Oversight (jblote@sjcoe.net)	468-5907
Nicole Lorenz, Manager, Internal Audit (nlorenz@sjcoe.net).....	468-9053
Carla Schafer, Manager, District Financial Services (cschafer@sjcoe.net).....	468-4829

Business Service Areas

Accounting System Coordination.....	468-4830
Accounts Control.....	468-5907
Apportionments	
Attendance Reports.....	468-4842
J-50 Special Education	468-4829
J-141 Transportation	468-4829
ROC/P Regular Entitlement.....	468-4830
Lottery.....	468-4829
Revenue Limits	
Form K-12	468-4829
Form O.....	468-4829
Budget & Finance Reports	
SACS Reporting	
County Schools Accounting	468-4828
County Schools Budget.....	468-4827
Districts - Interim/Budget.....	468-5907
Districts - Unaudited Actuals.....	468-4829
Charter Schools.....	468-4830
Commercial Warrants	
Districts.....	468-4845
County Schools.....	468-4834
Construction/Facilities	468-9122
Gann Limits	
Districts/County Schools	468-4829
Health, Workers' Compensation, JPA's and Property/Liability	468-4830
Operations	468-9061
Educational Foundation	468-9061
Payroll Services	
County-wide Payroll/Benefits.....	
Beginning Letter of Employee's last Name	
A-F.....	468-4832
G-N	468-9205
O-Z	468-9240

County-wide Payroll Taxes & Payments.....	468-4838
District System User Support	468-4835
Direct Service School Districts Payroll.....	468-4838
Payroll & PERS & FICA/OASDI	468-4840
Payroll & STRS Retirement	468-4837
Purchasing.....	468-9127
Revenue Deposits	
County Schools.....	468-4817
Districts.....	468-4841

**Data Processing JPA
Information Technology**

FAX: 468-4879

Jerry Springer, Director, Information Technology (jspringer@sjcoe.net).....	468-4870
General Information.....	468-4870
Help Desk (helpdesk@sjcoe.net).....	468-4874
Hardware Repair.....	468-4872

STUDENT PROGRAMS AND SERVICES

Nelson Center • 2901 Arch-Airport Road • FAX: 468-4988

Mick Founts, Deputy Superintendent (mfounts@sjcoe.net)	468-9033
Denise Irvin, Executive Assistant (dirvin@sjcoe.net).....	468-9033
General Information.....	468-9266

Public Information Office

Trent Allen, Public Information Officer (tallen@sjcoe.net)	468-4937
	(FAX: 468-4987)

SJCOE Productions

Carlin Jardine, Producer (cjardine@sjcoe.net).....	468-9166
	(FAX: 468-4987)

COUNTY OPERATED SCHOOLS AND PROGRAMS

Education Service Center • 2707 Transworld Dr.

Jacqueline Flowers, Assistant Superintendent (jflowers@sjcoe.net)	468-9107
Kelly Fry, Executive Assistant (kfry@sjcoe.net).....	468-9107
	(FAX: 468-4951)
General Information.....	468-4847
	(FAX: 468-9051)

Expulsion/Interdistrict Appeals

Telka Walser, Director II (twalser@sjcoe.net)..... **468-9210**
(FAX: 468-4984)

Foster Youth Services

Mike Bagnell, Project Manager II (mbagnell@sjcoe.net)..... **468-9104**
(FAX: 468-4984)

Student Services

Elsa Lopez, Coordinator II (elopez@sjcoe.net)..... **468-9144**
(FAX: 468-9051)

Technology

Randy Gibbs, Program Manager I (rgibbs@sjcoe.net)..... **468-9093**
(FAX: 468-4916)

Alternative Programs

FAX: 468-4984

Telka Walser, Director II (twalser@sjcoe.net) **468-9210**

Alternative Programs

Janine Cuaresma, Director (jcuaresma@sjcoe.net) **468-9091**

Wendy Frink, Director (wfrink@sjcoe.net) **468-9091**

Bruce Kern, Director (bkern@sjcoe.net) **468-9091**

Heidi McFadden, Director (hmcFadden@sjcoe.net)..... **468-9091**

Deb Nickols, Director (dnickols@sjcoe.net) **468-9091**

Regional Occupational Centers/Programs

FAX: 468-4984

Doug Martin, Director (dmartin@sjcoe.net)..... **468-9005**

Cozette Walters-Swanson, Program Specialist **468-9105**
(cwalters@sjcoe.net)

Don Simonich, Consultant (dsimonich@sjcoe.net)..... **468-9003**

WorkStart YES*

FAX: 468-4862

Sheilah Goulart, Program Manager II(sgoulart@sjcoe.net) **468-9179**

Thomas Reeves, Project Manager II (treeves@sjcoe.net)..... **468-9179**

Outdoor Education

FAX: (209) 468-4984

Dan Randrup, Coordinator II, (drandrup@sjcoe.net)..... **468-4809**

Gregory Bahr, Program Manager II, (gbahr@sjcoe.net) **993-4243**

EDUCATIONAL SERVICES

Education Service Center • 2707 Transworld Dr.

Gary F. Dei Rossi, Assistant Superintendent, Curriculum & Instruction

(gdeirossi@sjcoe.net) **468-9027**
Janesse Hodgson, Executive Assistant (jhodgson@sjcoe.net) **468-9027**
(FAX: 468-9232)

Michele Badovinac, Program Manager II, AVID

(mbadovinac@sjcoe.net)..... **468-9189**
Major Areas of Responsibility: (FAX: 468-9232)
AVID (Advancement Via Individual Determination)
California Student Aid/FAFSA Support
Anna Lotti, Program Manager I (alotti@sjcoe.net)..... **468-9189**
Major Areas of Responsibility:
AVID/AP (FAX: 468-9232)

Jamie Baiocchi, Director, Early Childhood Education **468-9031**
(jbaiocchi@sjcoe.net) (FAX: 468-9263)
Valerie Denero, Project Manager II, Child Care Professional
Growth Project (vdenero@sjcoe.net) **468-4808**
(FAX: 468-9263)

Melissa Eads, Project Manager II, School Readiness County
Coordinator (meads@sjcoe.net) **468-4855**
(FAX: 468-9263)

Cathy Long, Coordinator, Early Childhood Education
(calong@sjcoe.net) **468-5979**
(FAX: 468-9263)

Dawn Speaks, Project Manager II, Centralized Eligibility List and
AB 212 Staff Retention Incentive (dspeaks@sjcoe.net)..... **468-9198**
(FAX: 468-9263)

Rhonda Cicolani, Director of Equity-Williams Case Settlement
(rcicolani@sjcoe.net)..... **468-9082**
(FAX: 468-9232)

Sheri Coburn, Director, Comprehensive Health Programs..... **468-4960**
(scoburn@sjcoe.net) (FAX: 468-4955)

Major Areas of Responsibility:
Coordinated School Health Programs Health Education
Peer Helping Conference Physical Education
Safe & Drug Free Schools (Title IV) Medi-Cal LEA
School Violence Reduction HIV/AIDS Program
Teenage Pregnancy Prevention (SB1170)
Tobacco Use Prevention Education (TUPE - Prop 99)
Medi-Cal Administrative Activity

Corrie Estes, Coordinator, School Community Policing
Partnership Program (gubaldi@sjcoe.net)..... **468-9167**
Major Areas of Responsibility: (FAX: 468-4955)
School, Community Policing Program

County Operated Schools Program, School Nurse
Medi-Cal Billing

- Eric Washburn, Coordinator, Preschool Programs
(ewashburn@sjcoe.net) **468-4960**
Major Areas of Responsibility: (FAX: 468-4955)
Preschool
- Meredith Davis, Coordinator, Student Activities and Events
(medavis@sjcoe.net)..... **468-4866**
(FAX: 468-9232)
- Major Areas of Responsibility:
Academic Decathlon
Fine Arts Day
Mock Trial
Science Olympiad
Spelling Bee
Academic Pentathlon
Pinnacle Team
- Bill Engelhardt, Director, Instructional Technology **468-4883**
(bengelhardt@sjcoe.net) (FAX: 468-9124)
- Major Areas of Responsibility:
CTAP Grant
Technology Professional Staff Development
Media Duplication
Fire Up Your Future
Student Leadership Academies
Software Preview
Video Conferencing
Digital Video
Distant Learning
Robotics Lab
- Ellen Hancock, Director, Reading Implementation Center **468-4967**
(ehancock@sjcoe.net) (FAX: 468-9232)
- Major Areas of Responsibility:
Director for AB 466 and AB 75 Training
Lead for School Improvement Team
National Board Certification
SAIT
- Terri Rodger, Program Manager II, Site Coordinator & **468-9084**
Content Specialist AB 466 (trodger@sjcoe.net) (FAX: 468-9232)
- Kent Hinton, Director, Assessment Projects (kbhinton@sjcoe.net) **468-9257**
Major Areas of Responsibility: (FAX: 468-9263)
Grants and Evaluations
Statewide Assessment Projects

Catherine Kearney, Director, Teacher Development **468-9116**
 (ckearney@sjcoe.net) (FAX: 468-9124)
 Major Areas of Responsibility:
 BTSA
 Project Impact
 Teacher Internships/Credential Programs
 AB496 Math Initiative
 PAR Consortium
 Administrative Services Credential Program

Kathy Athey, Coordinator (kathey@sjcoe.net)..... **468-9190**
 Major Areas of Responsibility: (FAX: 468-9124)
 Beginning Teacher Support and Assessment (BTSA/CFASST Training

Pamela Kelly, Manager
 (pkelly@sjcoe.net)..... **468-9192**
 Major Areas of Responsibility: (FAX: 468-9124)
 Admissions and Support Services

Claudia Lockwood, Director, Multilingual Education
 (clockwood@sjcoe.net) **468-4865**
 Major Areas of Responsibility: (FAX: 468-9268)
 Bilingual/Teacher Training Project
 Bilingual and English Language Acquisition Programs and Services
 California English Language Development Training (CELDT)
 CLAD/BCLAD
 ELLA (Formerly MTTI)
 Foreign Language
 Indian Institute
 SB395 Authorizations
 Title III
 Writing Reform Institute for Teaching English (WRITE) Institute

Karen Linn-Nieves, Program Manager, Language Acquisition
 and Development (klinnnieves@sjcoe.net)..... **468-9023**

Annie Nguyen, Program Manager, Language Acquisition
 and Development (anguyen@sjcoe.net)..... **468-5958**
 (FAX: 468-9268)

Kimberly Martinez, Regional Lead, CA Preschool Instructional
 Network (CPIN) (kmartinez@sjcoe.net)..... **468-9295**
 (FAX: 468-9232)

Katy Downs-Stroh, Program Manager I, CPIN Special Lead
 (cdownsstroh@sjcoe.net)..... **468-5983**
 (FAX: 468-9232)

Kathryn Scholl, Director, State & Federal Programs and Language Arts
 (kscholl@sjcoe.net) **468-9177**
 Major Areas of Responsibility: (FAX: 468-9232)
 State and Federal Programs
 Assessment
 Language Arts

- Satinder Singh, Director, Mathematics (ssingh@sjcoe.net) **468-9177**
 Major Areas of Responsibility: (FAX: 468-9232)
 Mathematics
- Susan Iida, Coordinator II, Mathematics (siida@sjcoe.net)..... **468-9177**
 (FAX: 468-9232)
- Garry Potten, Math Consultant (gpotten@sjcoe.net)..... **468-9177**
 (FAX: 468-9232)
- Olivia Sosa-Kropp, Director II, Migrant Education (ososa@sjcoe.net) **468-9158**
 Major Areas of Responsibility: (FAX: 468-4890)
 Migrant Education
- Deborah Abello, Director, Migrant Education (dabello@sjcoe.net) 468-5917
- Connie Tate, Director, Regional Technical Assistance Center **468-9231**
 (ctate@sjcoe.net) (FAX: 468-9232)
 Major Areas of Responsibility:
 Reading First Districts
- Charles Vidal, Director, Regional System of District & School Support
 (cvidal@sjcoe.net) **468-9056**
 Major Areas of Responsibility: (FAX: 468-9232)
 Regional System of District & School Support
 NCLB, Program Improvement Districts/Schools
- Shela Seaton, Program Manager II (sseaton@sjcoe.net) **468-9056**
 (FAX: 468-9232)
- Jennifer Davis, Project Manager II (jdavis@sjcoe.net) **468-9056**
 (FAX: 468-9232)
- Sandi Wendell, Coordinator, Musical Student Events..... **468-9264**
 (swendell@sjcoe.net) (FAX: 468-9232)
 Major Areas of Responsibility:
 Artists in Schools
 County Contracted Music Services
 County High School Honors Band & Choir
 County Middle School Band Festival
 County Middle School Honor Band
 County Solo & Ensemble Festival
- Veray Wickham, Coordinator, Community Involvement..... **468-9021**
 (vwickham@sjcoe.net) (FAX: 468-9232)
 Major Areas of Responsibility:
 Region 6 Service Learning Lead
 Region 6 Service Learning Training & Technical Assistance Program
 Center for CWIC Education Programs
 - We The People
 - Project Citizen
 Math Smart Tutoring
 Parent Involvement

Judi Wilson, Director, Science & Special Projects **468-4880**
(jwilson@sjcoe.net) (FAX: 468-9170)

Major Areas of Responsibility:

- California Regional Environmental Education Community (CREEC)
- Capitol Area Science Education Leaders (CASEL)
- Math, Science Project Day
- Teaching Opportunities for Partners in Science (TOPS)
- Dinner with a Scientist
- Delta Sierra Science Project
- JASON Consortium
- Delta Educators for Learning, Teaching & Action (DELTA)
- San Joaquin Biotech Consortium
- Small District Professional Development Consortium
- SPACE Consortium - StarLab
- Great Explorations in Math & Science (GEMS) Regional Training Site
- Science Fair
- Teaching, Experimentation, Achievement & Mentoring in Science (TEAM Sci)

Diane Carnahan, K-12 Alliance, Regional Director
(dcarnahan@sjcoe.net)..... **468-9096**

Major Areas of Responsibility: (FAX: 468-9170)

- K-12 Science & Math Professional Development
- Literacy in Science Education (LISA)

Heather Fogg, Visiting Educator, Environmental Education..... **468-4880**
(hfogg@sjcoe.net) (FAX: 468-9170)

Major Areas of Responsibility:

- California Regional Environmental Education Community/CREEC/ Region 6A
- Delta Educators for Learning, Teaching & Action (DELTA)
- Alliance of Leaders in Environmental Education
- Retired Scientists in the Classroom (TOPS)
- GEMS Training Center

Christina Fugazi, Program Manager, University Partnerships/ **468-9096**
Science Education (cfugazi@sjcoe.net) (FAX: 468-9170)

Major Areas of Responsibility:

- TEAM Science
- Delta Sierra Science Project

Mark McKay, Visiting Educator **468-8920**

Education Service Areas

Academic Decathlon.....	468-4866
Academic Pentathlon	468-4866
Advancement Via Individual Determination (AVID)	468-9189
Assessment.....	468-9177
BTSA	468-9116
Community Involvement	468-9021
Delta Sierra Science Project.....	468-4880
English Language Learners.....	468-4978

Fine Arts Day	468-4866
Health Programs.....	468-4960
Homework Hotline.....	943-7588
Instructional Technology.....	468-4883
K-12 Alliance for Math/Science	468-9096
Language Acquisition and Development	468-4978
Mathematics.....	468-9177
Migrant Education	468-9200
Mock Trial.....	468-4866
Music Programs	468-9264
National Board Certification	468-4967
Reading Implementation Center	468-4967
Reading/Language Arts.....	468-9177
Reading First.....	468-9231
Regional System of District & School Support	468-9056
Science	468-4880
Science Fair.....	468-4880
Science Olympiad.....	468-4866
Spelling Bee.....	468-4866
Star Lab	468-9096
State/Federal Programs	468-9177
Teacher Development (District Intern/Credential Programs).....	468-9116
Williams Settlement.....	468-9082

SPECIAL EDUCATION DIVISION

Special Education Local Plan Area (SELPA)

2707 Transworld Dr.

(FAX 468-4979)

Sandee Kludt, Assistant Superintendent/SELPA Director	468-4925
(skludt@sjcoe.net)	
PJ Hamilton, Executive Assistant (pjhamilton@sjcoe.net)	468-4925
SELPA Office.....	468-4925
Kimberly Andreasen-Grooms, Management Information System	468-9284
(kandreasen@sjcoe.net)	
Jamie Spaulding, Educational Specialist (jspaulding@sjcoe.net)	468-4907
Kris Rodriguez, Educational Specialist (krodriguez@sjcoe.net).....	468-4928
Joan Justice-Brown, Educational Specialist (jjustice@sjcoe.net)	468-4928
Margaret St. George, Project Manager (mstgeorge@sjcoe.net)	468-4908
Sharon Brenneise, Project Administrator, Alternative	468-9283
Dispute Resolution (sbrenneise@sjcoe.net)	

Psychological Services

Zenon Castillo (zcastillo@sjcoe.net)	468-9273
Chris Condon (ccondon@sjcoe.net)	468-9272
Vincent Hernandez (vhernandez@sjcoe.net).....	468-9270
Kris Rodriguez (krodriguez@sjcoe.net)	468-4928
Michael Sexton (msexton@sjcoe.net)	468-4902
Karen Reasoner (kreasoner@sjcoe.net).....	468-5988

Special Education Programs **468-9281**
2707 Transworld Dr. (FAX: 468-4979)

Kathy Skeels, Director (kskeels@sjcoe.net)..... **468-9279**

John J. McFall School • 1810 Hoyt Lane • Manteca 95336 • FAX: 982-5020
Dorian Rice, Program Administrator (drice@sjcoe.net) **823-1383**

Redwood School • 3555 Wilmarth Road, Stockton 95215 • FAX: 931-0938
Brandi Brunni, Program Administrator (bbrunni@sjcoe.net) **931-4047x15**

Satellite Classes

Jonathan Martin, Program Administrator (jomartin@sjcoe.net) **823-1383**

Brandi Brunni, Program Administrator (bbrunni@sjcoe.net)..... **931-4047x15**

Clint Eatmon, Program Administrator (ceatmon@sjcoe.net) **931-4047x31**

Dorian Rice, Program Administrator (drice@sjcoe.net)..... **823-1383**

CALIFORNIA SCHOOL BOARDS ASSOCIATION

3100 Beacon Blvd. • West Sacramento 95691 • FAX: (916) 371-4691

Scott Plotkin, Executive Director **(800) 266-3382**

PARENT TEACHER STUDENT ASSOCIATION

8th District Executive Board

8th District PTSA, 1301 S. Crescent Avenue, Lodi, CA 95240-6001

Kathy Cassebarth, President (party@inreach.com)..... **224-7828**

Nan Austin, 1st Vice-President (Leadership) (pts8thdistrict@aol.com) ... **669-0654**

Tina Wiseman, 2nd Vice-President (Membership) **669-1015**

Robin Schlitz, Treasurer (rschlitz@aol.com) **634-6287**

Cheryl Barnes, Secretary (cqbarnie@hotmail.com) **951-3594**

Liz Halloran, Reflections **368-2420**

Temple Gallagher, Convention Chair (temgal@comcast.net) **931-3336**

Area Counselors

Administrators, Gloria Evosevich (gevosevich@lodiUSD.k12.ca.us) **331-7378**

Lincoln Council, Lisa Walker (lwalker@lUSD.net) **953-8711**

Manteca, Patti Fichtner (edwf@softcom.net)..... **823-6560**

Mariposa, Dawn Pederson (ped@yosemite.net)..... **966-4579**

Spanish, Ana Bertha Castellanos (abc1959@hotmail.com) **838-7587**

Students, Amanda Kutcher..... **632-9120**

PROFESSIONAL ASSOCIATIONS

Banta Educators' Association

Teresa Lorentz, Banta (tlorentz@sjcoe.net) **835-0171**

California School Employees' Association

Michelle Madrid, Lodi Unified Chapter No. 77

820 S. Cluff Avenue, Lodi 95240 333-7648
(FAX: 331-7067)

Escalon Unified Teachers' Association

Ray Roncale, President, Dent 838-7031

Jefferson Teachers' Association

Jeniene Lang, Hawkins 839-2380

Lammersville Teachers' Association

Mike Herron, President, Lammersville 835-0138

Lincoln Unified Teachers' Association

Miriam Wattel, President, Claudia Landeen 953-8660

Association of Linden Educators

G. Scott Shields, Waterloo, (gshields@sjcoe.net) 931-0818

Lodi Education Association

Mike Klarer, LEA Office, (o-lodied@inreach.com) 477-2425

Manteca Educators' Association

Stephanie Cretser, Stella Brockman 825-3300

New Jerusalem Educators' Association

Kathy Pocaroba, President, New Jerusalem 835-2597

Retired Teachers' Association

Ginger Jacobs, San Joaquin Division #20 477-4237

Ripon Unified District Teachers' Association

Rod Wright, Ripon High (rowright@sjcoe.net) 599-4287

San Joaquin Association of Educational Office Professionals (SJ Ed Pros)

Debi Biggs, President 953-8790
c/o Lincoln Unified School District
2010 W. Swain Rd., Stockton 95207

San Joaquin County UTP Coordinating Council

Julie Escobedo, South 831-5214
Executive Office - 7330 North West Lane, Stockton 95210 478-6091
Post Office Box 8465, Stockton 95208-0465
John E. Stephens, Jr., Executive Director
Vicki Marien, Executive Director
Mary Scott, Administrative Assistant
Tami Benton, Associate Staff

San Joaquin County Staff Teachers' Association
Traci Suyeyasu, Stockton Community School 473-1862

San Joaquin Delta College Teachers' Association
Al Ortiz, San Joaquin Delta Community College 954-5213

Stockton Teachers' Association
Bonnie Boggs, President 478-5074
Executive Office - 7330 North West Lane, Stockton 95210.....478-5074
P.O. Box 8465, Stockton 95208-04675
Eliyahu Rabin, Executive Director
Priscilla Williams, Administrative Assistant
Jayne Crabill, Membership
Chris Smith, Secretary

Tracy Educators' Association
Steve Sievers, West High (ssievers@tusd.net) 832-0832

SAN JOAQUIN COUNTY SCHOOL BOARDS ASSOCIATION

P.O. Box 213030, Stockton 95213-9030

Frank Ferral, President..... 468-4802

San Joaquin County School Districts

Banta Elementary School District

Trustees meet the second Thursday of each month

Frank I. Silva.....President
 Daniel Rocha
 Steve Weinzapfel

SCHOOL

Banta (grades K thru 8; enrollment: 300)
 22345 South El Rancho Road, Tracy 95304-9413 **835-0171**
(FAX: 835-0319)
 William Draa (wdraa@sjcoe.net)..... Superintendent
 Albert Garibaldi (algaribaldi@sjcoe.net)..... Assistant Superintendent/Principal

Escalon Unified School District

Trustees meet the first and third Tuesday of each month

Diane Alcorn, Area ThreePresident
 Phil Brumley, Area One Vice-President
 Janai Stanton, Area Four Clerk
 Al Canton, Area Two
 John Largent, Area Five

ADMINISTRATION

1520 Yosemite Avenue, Escalon 95320
838-3591 or **838-3592** / Stockton **462-2346**
 (FAX: 838-6703)

Bob Wallace (bwallace@sjcoe.net) Superintendent
 Dave Mantooh..... Assistant Superintendent, Instruction
 Sandra Rodriguez..... Director, Administrative Services
 Linda Frontz..... Director, Curriculum, Special Education
 and Categorical Programs **838-8910**
(FAX: 838-2800)

SCHOOLS

Collegeville (grades: K thru 5; enrollment: 171)
 6701 South Jack Tone Road, Stockton 95205 **941-2007**
(FAX: 462-7126)
 Bob Amato (bamato@sjcoe.net)..... Principal

Dent (grades: K thru 5; enrollment: 858)
1998 Yosemite Avenue, Escalon 95320
Janet Dean (jdean@sjcoe.net)..... Principal
838-7031
(FAX: 838-7638)

El Portal Middle (grades: 6 thru 8; enrollment: 722)
805 First Street, Escalon 95320
Pam Collingsworth (pcollingsworth@sjcoe.net)..... Principal
838-7095
(FAX: 838-3017)

Escalon High (grades: 9 thru 12; enrollment: 1,064)
1528 Yosemite Avenue, Escalon 95320
Joel Johannsen (jjohannsen@sjcoe.net)..... Principal
838-7073
(FAX: 838-6127)

Farmington (grades: K thru 5; enrollment: 156)
P.O. Box 68, Farmington 95230
Raul Rameriz (rramirez@sjcoe.net) Principal
886-5344
(FAX: 886-5014)

Van Allen (grades: K thru 5; enrollment: 175)
21051 East Highway 120, Escalon 95320
Bob Amato (bamato@sjcoe.net)..... Principal
838-2931
(FAX: 838-1832)

Vista High (Continuation Education; enrollment: 31)
1204 Escalon Ave., Escalon 95320
Linda Frontz (lfrontz@sjcoe.net)..... Principal
838-1450
(FAX: 838-1922)

Holt Union Elementary School District

Trustees meet the first Monday of each month

Rosemary Weitz President
Barbie Bellemare
Herb Bright
Al Machado
Donna Neaderhiser

SCHOOL

Holt (grades: K thru 8; enrollment: 127)
1545 South Holt Road, Stockton 95206-961845
Chuck E. Holland (chuck@sonnet.com) Superintendent/ Principal
463-2590
(FAX: 463-0120)

Jefferson Elementary School District

Trustees meet the second Tuesday of each month

Todd Wetherall President
Michelle Mercer Vice-President
Debbie Wingo Clerk
Pete Carlson
Dan Wells

DISTRICT OFFICE

7500 Linne Road, Tracy 95304
836-3388 (FAX: 836-2930)

Ed Quinn (equinn@sjcoe.net) Superintendent **836-3388**
Carol Metivier (cmetivier@sjcoe.net) Human Resources **836-0232**
Grace Merritt (gmerritt@sjcoe.net) Administrative Secretary **836-3388**
Dana Taylor (dataylor@sjcoe.net) Business Manager **836-2766**
Debra Hopman (dhopman@sjcoe.net) Director, Special Education **839-1842**

SCHOOLS

Hawkins (grades: K thru 8; enrollment: 830)
475 Darlene Lane, Tracy 95377 **839-2380**
(FAX: 839-2384)

Paula Finton (pfinton@sjcoe.net) Principal

Jefferson (grades: 5 thru 8; enrollment: 485)
7500 Linne Rd., Tracy 95304 **835-3053**
(FAX: 835-4419)

Jim Bridges (jbridges@sjcoe.net) Principal

Monticello (grades: K thru 4; enrollment: 450)
1001 Cambridge Place, Tracy 95377 **833-9300**
(FAX: 833-9317)

Leslie Adair (ladair@sjcoe.net) Principal

Traina (grades: K thru 6; enrollment: 510)
1219 Whispering Wind Drive, Tracy, 95377 **839-2379**
(FAX: 839-2314)

Susan Moffitt (smoffitt@sjcoe.net) Principal

Lammersville Elementary School District

Trustees meet the fourth Tuesday of each month

Stewart Easton President
Chris Cunningham Clerk
JP Cole
Shane Nielson
Yolanda Salsedo

DISTRICT OFFICE
300 Legacy Drive, Mountain House 95391
836-7400 (FAX: 835-1113)

Bill Lebo(wlebo@sjcoe.net)..... Superintendent

SCHOOLS

Lammersville (grades: K thru 8; enrollment: 300)
16555 West Von Sosten Road, Tracy 95304 **835-0138**
(FAX: 835-3681)

Debbie Burnette (dburnette@sjcoe.net)..... Principal

Wicklund Elementary (grades: K thru 8; enrollment: 500)
300 Legacy Drive, Mountain House 95391 **836-7200**
(FAX: 835-1113)

Gregg Elliott (gelliott@sjcoe.net)..... Principal

Lincoln Unified School District

Trustees meet the second and fourth Wednesdays of each month (*with exceptions*)

Everett L. Low President
John Pratt Vice-President/Clerk
Susan Lenz Member
Paul Canepa Member
Dean Andal Member
Leana Taing Student Member

ADMINISTRATION

Education Center 2010 West Swain Road, Stockton 95207
953-8700 (FAX: 474-7817)

Steven A. Lowder (slowder@lUSD.net)..... Superintendent
Leah Cleveland Executive Assistant to the Superintendent **953-8712**

Katey Talbot (ktalbot@lUSD.net)..... Assoc. Superintendent, Business Services
Carolyn Lipnick Administrative Assistant **953-8716**
George Anzo Director, Operations **953-8592**
Tom Cleveland Director, Facilities, Maint. & Construction **953-8585**
Kathy Drennen Director, Child Nutrition Services **953-8655**
Karen Rice Director, Business Services **953-8722**
Jeff Sears Director, Information Technology **953-8779**

Janet Petsche (jpetsche@lUSD.net) Assoc. Superintendent, Education Services
Sharon Fite Administrative Assistant **953-8714**
Beverly Clark Director, State/Federal Programs **953-8735**
Julie Hisaka Coordinator, Educational Technology **953-8606**
Suzanne Fagundes Director, Child Welfare and Attendance **953-8727**

Linda Fisher Director, Curriculum & Instruction **953-8738**
 Robin Searway Director, Special Education **953-8726**

Tom Uslan (tuslan@lUSD.net) Associate Superintendent, Human Resources
 Kathy Esquer Administrative Assistant **953-8733**

SCHOOLS

Barron (Mable) (grades: K thru 8; enrollment: 720)
 6835 Cumberland Place, Stockton 95219 **953-8796**

(FAX: 952-5811)

Ellen Wehrs (ewehrs@lUSD.net)..... Principal

Brookside (grades: K thru 8; enrollment: 770)
 2962 Brookside Rd., Stockton 95219 **953-8642**

Maureen Oechel (moechel@lUSD.net)..... Principal
 (FAX: 953-8640)

Colonial Heights (grades: K thru 8; enrollment: 605)
 8135 Balboa Avenue, Stockton 95209 **953-8783**

(FAX: 953-8440)

Lance Morrow (lmorrow@lUSD.net)..... Principal

Knoles (Tully C.) (grades: pre-K 75; K thru 8; enrollment: 540)
 6511 Clarksburg Place, Stockton 95207 **953-8775**

(FAX: 474-2107)

Kirk Nicholas (knicholas@lUSD.net)..... Principal

Landeen (Claudia) (grades: K thru 8; enrollment: 685)
 4128 Feather River Dr., Stockton 95219 **953-8661**

(FAX: 953-8821)

Pam Warman (pwarman@lUSD.net) Principal

Larsson (Sture) (grades: 9 thru 12; enrollment: 90)
 1813 McClellan Way, Stockton 95207 **953-8687**

(FAX: 953-8741)

Phyllis Kahl (pkahl@lUSD.net)..... Principal

Lincoln Elementary (grades: K thru 6; enrollment: 550)
 818 W. Lincoln Road, Stockton 95207 **953-8652**

(FAX: 951-5329)

Joan Calonico (jcalonico@lUSD.net) Principal

Lincoln High (grades: 9 thru 12; enrollment: 2,705)
 6844 Alexandria Place, Stockton 95207 (FAX: 952-4646)

Debbi Holmerud (dholmerud@lUSD.net).....Principal **953-8921**

April Scott (ascott@lUSD.net) Vice Principal **953-8916**

Vicky Trent Office Supervisor **953-8921**

Scott Tatum (statum@lUSD.net) Assistant Principal (a-e) **953-8933**

Cheryl Cain (ccain@lUSD.net)..... Assistant Principal (f-l) **953-8932**
 Tony Shah (tshah@lUSD.net)..... Assistant Principal (m-r) **953-8934**
 Tara Bell (tbell@lUSD.net).....Assistant Principal (s-z) **953-8935**
 Joe Hancock (jhancock@lUSD.net)Director, Athletics **953-8924**

McCandless Program (grades 9 thru 12; enrollment: 60)
 2020 W. Swain Rd., Stockton 95207 **953-8740**
 (FAX: 476-9168)
 Phyllis Kahl (pkahl@lUSD.net)..... Principal

Riggio (Don) (grades: K thru 8; enrollment: 630)
 3110 Brookside Rd., Stockton 95219 **953-8761**
 (FAX: 953-8823)
 Michele Tatum (mtatum@lUSD.net) Principal

Sierra Middle (grades: 7 and 8; enrollment: 520)
 6776 Alexandria Place, Stockton 95207 **953-8748**
 (FAX: 953-8747)
 Terry Asplund (tasplund@lUSD.net)..... Principal

Village Oaks (grades: K thru 6; enrollment: 465)
 1900 West Swain Road, Stockton 95207 **953-8790**
 (FAX: 472-1644)
 Linda Myers (lmyers@lUSD.net) Substitute Principal

Williams (John R.) (grades: K thru 8; enrollment: 550)
 2450 Meadow Avenue, Stockton 95207 **953-8767**
 (FAX: 952-4642)
 Temeca Richardson (trichardson@lUSD.net)..... Principal

Linden Unified School District

Trustees meet the Third Wednesday of each month

Fred Podesta III, Area Four..... President
 John Sanguinetti, Area Five Vice-President
 Jay Colombini, Area Four Clerk
 Randy Hamilton, Area Six Member
 Diana Machado, Area One Member
 Clay Titus, Area Three Member
 Ken Vogel, Area Two Member

ADMINISTRATION

18527 East Main Street, Linden 95236
887-3894 (FAX: 887-2250)

Ronald Estes (restes@sjcoe.net) Superintendent
 Jane SteinkampAssistant Superintendent, Instruction/Personnel
 (jsteinkamp@sjcoe.net)
 Rebecca Hall (rhall@sjcoe.net) Business Manager
 Steve Payne (spayne@sjcoe.net)Director, Student Services

SCHOOLS

Glenwood (grades: 1 thru 8; enrollment: 427)
 2005 North Alpine Road, Stockton 95215 **931-3229**
 (FAX: 931-0705)
 Ken Allen (kallen@sjcoe.net) Principal

Linden (grades: K thru 4; enrollment: 511)
 18100 E. Front St., Linden 95236 **887-3600**
 (FAX: 887-2252)
 Tony Pimentel (tpimentel@sjcoe.net) Principal

Linden High (grades: 9 thru 12; enrollment: 734)
 18527 E. Front Street, Linden 95236 **887-3073**
 (FAX: 887-3815)
 Stephanie Markle (smarkle@sjcoe.net) Principal

Waterloo (grades: 5 thru 8; enrollment: 466)
 7007 North Pezzi Road, Stockton 95215 **931-0818**
 (FAX: 931-2915)
 Sandra Hanson (shanson@sjcoe.net) Principal

Waverly (grades: K thru 8; enrollment: 321)
 3507 Wilmarth Road, Stockton 95215 **931-0735**
 (FAX: 931-3509)
 Lisa Pettis (lpettis@sjcoe.net) Principal

Lodi Unified School District

Board of Education meets the first and third Tuesday of each month

Richard Jones, Area ThreePresident
 Richard Dean, Area Four Vice-President
 Peter Johnson, Area Seven Clerk
 Harvey Bills, Area Six
 Ken Davis, Area Two
 Kenneth Mullen, Area Five
 David Schindler, Area One

ADMINISTRATION
 1305 E. Vine St., Lodi 95240
331-7000 or 953-8000

	FAX #
William Huyett.....Superintendent (bhuyett@lodiUSD.k12.ca.us)	331-7010 (331-7256)
Carolyn Viel.....Executive Assist. to the Superintendent (cviel@lodiUSD.k12.ca.us)	331-7010 (331-7256)
Odie Douglas Associate Superintendent, K-12 & (odouglas@lodiUSD.k12.ca.us) Educational Services	331-7003 (331-7961)
Irvin Jefferson Coordinator, Community Relations (ijeffer@lodiUSD.k12.ca.us)	331-7766 (331-7961)
Barbara Johnston..... Admin. Dir., Curric./ (bjohnston@lodiUSD.k12.ca.us) Instr./Assessment	331-7028 (331-7981)
Randy Malandro..... Coordinator, Science/Inst. Tech./ (rmalandro@lodiUSD.k12.ca.us) Social Science	331-7239 (331-7981)
Paula Carroll Coordinator, Testing/Eval./ (pcarroll@lodiUSD.k12.ca.us) Promotion/Retention	331-7024 (331-7244)
Anne Cecchetti..... Coordinator, IMC/Art/ELA 7-12/ (acecchetti@lodiUSD.k12.ca.us) Academic Intervention	331-7020 (331-7981)
Kathy Scott.....Coordinator, BTSA/CTEI/PAR/ELA K-6 (kscott@lodiUSD.k12.ca.us)	331-7484 (331-7981)
John Coakley.....Coordinator, Math/GATE/Health (jcoakley@lodiUSD.k12.ca.us) Staff Development/PE /Music	331-7759 (331-7981)
Dale MunschDirector, Information Services (dmunsch@lodiUSD.k12.ca.us)	331-7212 (331-7039)
Doug Barge Chief Business Officer (dbarge@lodiUSD.k12.ca.us)	331-7121 (331-7142)
Carrie Hargis Director, Budgets (chargis@lodiUSD.k12.ca.us)	331-7975 (331-8083)
Mamie StarrAssistant Superintendent, (mstarr@lodiUSD.k12.ca.us) Facilities & Planning	331-7219 (331-7229)
Robert Silvano Construction Project Manager (rsilvano@lodiUSD.k12.ca.us)	331-7218 (331-7229)
Catherine Conrado Administrative Director, (cconrado@lodiUSD.k12.ca.us) Special Services/SELPA	331-7061 (331-7084)
Ivie Gonzalves Coordinator, Health Services (igonzalves@lodiUSD.k12.ca.us)	331-7075 (331-7067)
Steven Johnson..... Coordinator, Special Education (sjohnson@lodiUSD.k12.ca.us)	331-7080 (331-7084)
Debbie deGanna.....Coordinator, Categorical Programs (ddeganna@lodiUSD.k12.ca.us)	331-7034 (331-7961)
Bill Saunders..... Coordinator, Psychological Services (bsaunders@lodiUSD.k12.ca.us)	331-7046 (331-7084)
Catherine Pennington.....Assistant Superintendent, (cpennington@lodiUSD.k12.ca.us) Elementary Education	331-7257 (331-7031)
Dennis BrownAssistant Superintendent, (dbrown@lodiUSD.k12.ca.us) Secondary Education	331-7005 (331-7031)
Bob Gire..... Coord., Child Welfare and Attendance (bgire@lodiUSD.k12.ca.us)	331-7070 (331-7981)
Christine Malandro Coordinator, Multilingual/ (cmalandro@lodiUSD.k12.ca.us) Multicultural Ed.	331-7026 (331-7981)

Warren Sun.....	Director, Food Services (wsun@lodiUSD.k12.ca.us)	331-7155	(331-7289)
Mike Matranga.....	Director, Maintenance (mmatranga@lodiUSD.k12.ca.us) and Operations	331-7181	(331-7632)
Terry Fuglsang	Director, Transportation (tfuglsang@lodiUSD.k12.ca.us)	331-7169	(331-7821)
Cricket Koch	Director, Purchasing and (ckoch@lodiUSD.k12.ca.us) Warehouse	331-8014	(331-7124)
Madalynne Reese	Risk Manager (mreese@lodiUSD.k12.ca.us)	331-7145	(331-7142)
Steve Colwell	Principal, Adult Ed/ROP (scolwell@lodiUSD.k12.ca.us) Career Center	331-7608	(331-7167)
Len Casanega	Assistant Superintendent, Personnel/ (lcasanega@lodiUSD.k12.ca.us) Employee Relations	331-7100	(331-7144)
Mike McKilligan.....	Director, Certificated Personnel (mmckilligan@lodiUSD.k12.ca.us)	331-7091	(331-7144)
Elliott Grauman.....	Director, Classified Personnel (egrauman@lodiUSD.k12.ca.us)	331-7101	(331-7144)
Maria Fong.....	Controller (mfong@lodiUSD.k12.ca.us)	331-7123	(331-7124)
Fran Skipton.....	Payroll Manager (fskipton@lodiUSD.k12.ca.us)	331-7137	(331-7124)
Gary Yocum.....	Facility Planning Manager (gyocum@lodiUSD.k12.ca.us)	331-7213	(331-7229)

SCHOOLS

Adams (Ansel) (grades: K thru 6; enrollment: 957)
 9275 Glacier Point Drive, Stockton 95212 953-9506

(FAX: 953-9603)

Patti Morone (pmorone@lodiUSD.k12.ca.us) Principal

Adult (enrollment: 3,295)
 542 East Pine Street, Lodi 95240 **331-7607**

(FAX: 331-7167)

Steve Colwell (scolwell@lodiUSD.k12.ca.us) Principal

Independence School

North Campus/Liberty High (grades: 9 thru 12; enrollment: 189)
 660 W. Walnut, Lodi 95240 **331-7633**

(FAX: 331-7624)

South Campus/Plaza Robles (grades: 9 thru 12; enrollment: 204)
 9434 Thornton Rd., Stockton 95209 **953-8068**

(FAX: 953-8064)

Roberta Wall (rwall@lodiUSD.k12.ca.us) Principal

Bear Creek High (grades: 9 thru 12; enrollment: 2,283)
 10555 Thornton Road, Stockton 95209 **331-7234 or 953-8234**

(FAX: 953-8247)

Daryl Camp (dcamp@lodiUSD.k12.ca.us) Principal

Beckman (grades: K thru 6; enrollment: 640) (YRE)
2201 Scarborough Drive, Lodi 95240 **331-7410**
(FAX: 333-1175)
Lisa Hayes (lhayes@lodiUSD.k12.ca.us) Principal

Borchardt (Lois E.) (grades: K thru 6; enrollment: 670)
2445 Bluejay Way, Lodi 95240 **331-8212**
(FAX: 331-8241)
Janis Morehead (jmorehead@lodiUSD.k12.ca.us) Principal

Career Education (enrollment: 866)
421 S. Pleasant, Lodi 95240 **331-7642 or 953-8616**
(FAX: 331-7526)
Tami Somera (tsomera@lodiUSD.k12.ca.us).. ROC/P-Voc. Education Vice Principal

School Readiness/Preschool Services (grades: P thru 6; enrollment: 110)
Child Development Programs
701 Calaveras Street, Lodi 95240 **331-7252 or 953-8252**
(FAX: 331-7319)
Florence Costamagna (fcostamagna@lodiUSD.k12.ca.us) Director
Judy Murray (jmurray@lodiUSD.k12.ca.us) Director

Clairmont (grades: K thru 6; enrollment: 584) (YRE)
8282 Le Mans, Stockton 95210 **953-8267**
(FAX: 953-8276)
Susan Hitchcock (shitchcock@lodiUSD.k12.ca.us) Principal

Clements (grades: K thru 1; enrollment: 78)
19051 East Highway 88, P.O. Box 106, Lockeford 95237 **331-7300 or 759-3425**
(FAX: 759-9105)
Virginia Anderson (vanderson@lodiUSD.k12.ca.us) Principal

Creekside (grades: K thru 6; enrollment: 781) (YRE)
2515 Estate Drive, Stockton 95209 **331-7285 or 953-8285**
(FAX: 953-8296)
Vernon Renwanz (vrenwanz@lodiUSD.k12.ca.us) Principal

Davis (grades: K thru 6; enrollment: 475) (MT)
5224 East Morada Lane, Stockton 95212 **331-7301 or 953-8301**
(FAX: 953-8304)
Bev Brayshaw (bbrayshaw@lodiUSD.k12.ca.us) Principal

Delta Sierra Middle (grades: 7 & 8; enrollment: 627) (MT)
2255 Wagner Heights, Stockton 95209 **331-7510 or 953-8510**
(FAX: 953-8139)
Irene Outlaw (ioutlaw@lodiSD.k12.ca.us) Principal

Elkhorn (grades: 3 thru 8 enrollment: 265)
 10505 N. Davis Rd., Stockton 95209 **331-7330 or 953-8330**
 (FAX: 953-8319)
 Neil Young (nyoung@lodiUSD.k12.ca.us) Principal

Henderson (Community Day) (grades: 7 & 8; enrollment: 155)
 13451 N. Extension Rd., Lodi 95242 **331-7331**
 (FAX: 331-7601)
 Chris Kleinert (ckleinert@lodiUSD.k12.ca.us) Principal

Heritage (grades: K thru 3; enrollment: 490) (MT)
 509 Eden Street, Lodi 95240 **331-7334 or 953-8334**
 (FAX: 331-7344)
 Maria Cervantes (mcervantes@lodiUSD.k12.ca.us) Principal

Houston (grades: 1 thru 8; enrollment: 431)
 4600 East Acampo Road, Acampo 95220 **331-7475 or 953-8475**
 (FAX: 331-7405)
 Diane Shigematsu (dshigematsu@lodiUSD.k12.ca.us) Principal

Lakewood (grades: K thru 6; enrollment: 603) (YRE)
 1100 North Ham Lane, Lodi 95242 **331-7348 or 953-8348**
 (FAX: 331-7351)
 Deborah Roden (droden@lodiUSD.k12.ca.us) Principal

Larson (Ellerth E.) (grades: K thru 6; enrollment: 578) (MT)
 2375 Giannoni Way, Lodi 95242 **331-8391**
 (FAX: 331-8375)
 Cheryl Nilmeyer (cnilmeyer@lodiUSD.k12.ca.us) Principal

Lawrence (grades: K thru 6; enrollment: 557)
 721 Calaveras Street, Lodi 95240 **331-7356 or 953-8356**
 (FAX: 331-7357)
 Cathy Kurey (ckurey@lodiUSD.k12.ca.us) Principal

Liberty High (grades: continuation; enrollment: 128)
 660 West Walnut, Lodi 95240 **331-7633 or 953-8633**
 (FAX: 331-7624)
 Robert Rivas (rrivas@lodiUSD.k12.ca.us) Principal

Live Oak (grades: K thru 6; enrollment: 275)
 5099 East Bear Creek Road, Lodi 95240 **331-7370 or 953-8370**
 (FAX: 331-7302)
 Marianne Varni (mvarni@lodiUSD.k12.ca.us) Principal

Lockeford (grades: 2 thru 6; enrollment: 284)
 19456 North Tully Road, Lockeford 95237 **331-7214 or 727-5084**
 (FAX: 727-5802)
 Virginia Anderson (vanderson@lodiUSD.k12.ca.us) Principal

Lodi High (grades: 9 thru 12; enrollment: 2,468)
3 Pacific Avenue, Lodi 95242 **331-7815 or 953-8659**
(FAX: 331-7779)

William Atterberry (watterberry@lodiUSD.k12.ca.us) Principal

Lodi Middle (grades: 7 and 8; enrollment: 854)
945 South Ham Lane, Lodi 95242 **331-7544 or 953-8544**
(FAX: 331-7550)

Dawn Vetica (dvetica@lodiUSD.k12.ca.us) Principal

Mahin (Dorothy J.) (TMR; enrollment: 16)
5080 Armstrong Road, Lodi 95240 **331-7366**
Steven Johnson (sjohnson@lodiUSD.k12.ca.us) Principal

McAuliffe (Christa) Middle School (grades: 7-8; enrollment: 929)
3838 Iron Canyon Road, Stockton 95209 **953-9431**
(FAX: 953-9430)

Darla Briggs (dbriggs@lodiUSD.k12.ca.us) Principal

McNair (Ronald E.) High School (grades: 9-10; enrollment: 1,069)
9550 Ronald E. McNair Way, Stockton 95210 **953-9244**
(FAX: 953-3213)

Jim Davis (jdavis@lodiUSD.k12.ca.us) Principal

Millswood Middle (grades: 7-8; enrollment: 841)
233 N. Mills Avenue, Lodi 95242 **331-8332**
(FAX: 331-8347)

Sheree Flemmer (sflemmer@lodiUSD.k12.ca.us) Principal

Middle College High (grades: 9 thru 12; enrollment: 238)
San Joaquin Delta College - Holt 208
5151 Pacific Ave., Stockton 95207-5790 **954-5790**
(FAX: 954-5875)

Sherry Balian (sbalian@lodiUSD.k12.ca.us) Principal

Morada Middle (grades: 7 and 8; enrollment: 889)
5001 East Eastview Drive, Stockton 95212 **331-7490 or 953-8490**
(FAX: 953-8128)

Steve Takemoto (stakemoto@lodiUSD.k12.ca.us) Principal

Morgan (Julia) (grades: K thru 6; enrollment: 610)
3777 A.G. Spanos Blvd., Stockton 95209 **953-8453**
(FAX: 953-8090)

Linda Kapic (lkapic@lodiUSD.k12.ca.us) Principal

Muir (John) (grades: K thru 6; enrollment: 679)
2303 Whistler Way, Stockton 95209 **331-7312 or 953-8106**
(FAX: 953-8110)
Virginia Medford (vmedford@lodiUSD.k12.ca.us)..... Principal

Needham (grades: 4 thru 6; enrollment: 355) (MT)
420 S. Pleasant, Lodi 95240 **331-7375**
(FAX: 331-7483)
Carol Rivas (crivas@lodiUSD.k12.ca.us)..... Principal

Nichols (Leroy) (grades: K thru 6; enrollment: 385)
1301 South Crescent Avenue, Lodi 95240 **331-7378 or 953-8378**
(FAX: 331-7380)
Gloria Evosevich (gevosevich@lodiUSD.k12.ca.us) Principal

Oakwood (grades: K thru 6; enrollment: 692)
1315 Woodcreek Way, Stockton 95209 **331-7392 or 953-8392**
(FAX: 953-8004)
John Kirilov (jkirilov@lodiUSD.k12.ca.us) Principal

Parklane (grades: K thru 3; enrollment: 592)
8405 Tam O'Shanter, Stockton 95210 **331-7410 or 953-8410**
(FAX: 953-8084)
Mark Edwards (medwards@lodiUSD.k12.ca.us) Principal

Plaza Robles High (grades: continuation; enrollment: 126)
9434 Thornton Road, Stockton 95209 **331-7283 or 953-8068**
(FAX: 953-8064)
Bill Toledo (btoledo@lodiUSD.k12.ca.us) Principal

Reese (Erma B.) (grades: K thru 6; enrollment: 740) (YRE)
1800 West Elm Street, Lodi 95242 **331-7424 or 953-8424**
(FAX: 331-7431)
Celeste Bordner (cbordner@lodiUSD.k12.ca.us) Principal

Silva (Manlio) (grades: K thru 6; enrollment: 568) (MT)
6250 Scott Creek Drive, Stockton 95219 **953-9302**
(FAX: 953-9309)
Dan Faith (dfaith@lodiUSD.k12.ca.us) Principal

Sutherland (grades: 4 thru 6; enrollment: 476)
550 Spring River Cir., Stockton 95210 **953-8999**
(FAX: 953-8031)
Allison Gerrity (agerrity@lodiUSD.k12.ca.us) Principal

Tokay Colony (grades: K thru 6; enrollment: 134)
13520 East Live Oak Road, Lodi 95240 **331-7438 or 953-8438**
(FAX: 953-3200)
Kevin Harkin (kharkin@lodiUSD.k12.ca.us) Principal

Tokay High (grades: 9 thru 12; enrollment: 2,507)
1111 West Century Blvd., Lodi 95240 **331-7850** or **953-8690**
(FAX: 331-7168)
Erik Sandstrom (esandstrom@lodiUSD.k12.ca.us)..... Principal

Turner (grades: K thru 6; enrollment: 77)
18051 North Ray Road, Lodi 95242 **331-7440**
(FAX: 331-7533)
Denice Shigematsu (dschigematsu@lodiUSD.k12.ca.us)..... Principal

Victor (grades: K thru 6; enrollment: 241)
17670 Bruella Road, Post Office Box L, Victor 95253 **331-7441** or **953-8441**
(FAX: 331-7530)
Kevin Harkin (kharkin@lodiUSD.k12.ca.us)..... Principal

Vinewood (grades: K thru 6; enrollment: 521)
1600 West Tokay Street, Lodi 95242 **331-7445** or **953-8445**
(FAX: 331-7447)
Kitsy Smith (ksmith@lodiUSD.k12.ca.us)..... Principal

Wagner-Holt (grades: K thru 6; enrollment: 672)
8778 Brattle Place, Stockton 95209 **953-8407**
(FAX: 953-8403)
Janet Rogers (jrogers@lodiUSD.k12.ca.us)..... Principal

Washington (George) (grades: K thru 6; enrollment: 607) (YRE)
831 West Lockeford Street, Lodi 95240 **331-7451**
(FAX: 331-7320)
Linda Denman (ldenman@lodiUSD.k12.ca.us)..... Principal

Washington Development Center (Special Education; enrollment: 38)
825 West Lockeford Street, Lodi 95240 **331-7457** or **953-8457**
(FAX: 331-7320)
Linda Denman (ldenman@lodiUSD.k12.ca.us)..... Principal

Westwood (grades: K thru 6; enrollment: 632) (MT)
9444 Caywood, Stockton 95210 **953-8333**
(FAX: 953-8337)
Patty Sasaki (psasaki@lodiUSD.k12.ca.us)..... Principal

Manteca Unified School District
Trustees meet Tuesday (every three weeks)

Dale Fritchen, Area One President
Manuel A. Medeiros, Area Two Vice-President
Evelyn Moore, Area Five Clerk
Wendy King, Area Five Member
Michael Seelye, Area Three Member

Nancy Teicheira, Area Four Member
 vacant, Area Five Member

ADMINISTRATION

Post Office Box 32 (corner Louise & Airport Way), Manteca 95336
 District Office Telephone: **825-3200**

FAX #s:

Business Services: (825-3295)	Legal, Confidential: (825-3238)
Educational Services: (825-3225)	Facilities Planning: (825-3249)
IMC: (825-3274)	General Pay/Pers.: (825-3292)
Health Services: (825-3283)	Educ. Technology: (825-3280)
Grounds Shop: (825-3290)	Maint./Transport.: (825-3214)
Budget/Accounting: (825-0852)	

Catherine Nichols-Washer	Superintendent	Ext. 729
(cnicholswasher@sjcoe.net)		
Donald Halseth.....	Assistant Superintendent, Personnel Services	Ext. 742
(dhalseth@sjcoe.net)		
Michael S. Dodge.....	Assistant Superintendent, Business Services	Ext. 728
(mdodge@sjcoe.net)		
Jason Messer	Assistant Superintendent, Educational Services	Ext. 761
(jmesser@sjcoe.net)		
Cheryl Meeker	Director II, Elementary Education/Curriculum	Ext. 702
(cmeeker@sjcoe.net)		
Frances M. Roberts	Director I, Compensatory Education	Ext. 797
(froberts@sjcoe.net)		
John Fultz.....	Director I, Year Round Education/Enrollment	Ext. 820
(jfultz@sjcoe.net)		
Janice Callanan	Director II, Special Education	Ext. 743
(jcallanan@sjcoe.net)		
Steve Trantham	Director II, Business Services	Ext. 727
(strantham@sjcoe.net)		
John McKillip	Director II, Elementary Education/Instruction	Ext. 836
(jmckillip@sjcoe.net)		
Debbie Houck	(Interim) Director I, Child Welfare and Attendance	Ext. 762
(dhouck@sjcoe.net)		
Caroline Thibodeau.....	Coordinator, Health Services	Ext. 780
(cthibodeau@sjcoe.net)		
Robert E. Lee	Director II, Secondary Educational Services	Ext. 741
(rlee@sjcoe.net)		

SCHOOLS

Adult Education

311 East North, Manteca 95336

825-3100

(FAX: 825-3110)

Howard Holtzman (hholtzman@sjcoe.net)..... Principa

Brockman (Stella) (grades: K thru 8; enrollment: 853)
763 Silverado Drive, Manteca 95337 **825-3300**
(FAX: 825-3308)
Diane Medeiros (dmedeiros@sjcoe.net)..... Principal

Calla High (grades: 9 thru 12; enrollment: 237)
130 S. Austin Road, Manteca 95336 **825-3120**
(FAX: 825-3122)
Lindsay Munoz (lmunoz@sjcoe.net)..... Principal

Cowell (Joshua) (grades: K thru 8; enrollment: 595)
740 Pestana Avenue, Manteca 95336 **825-3310**
(FAX: 825-3314)
Harriet Myrick (hmyrick@sjcoe.net)..... Principal

East Union High (grades: 9 thru 12; enrollment: 1,612)
1700 North Union Road, Manteca 95336 **825-3125**
(FAX: 825-3148)
John V. Alba (jalba@sjcoe.net)..... Principal

Elliott (Brook) (grades: K thru 8; enrollment: 1,065)
1110 Stonum Lane, Manteca 95336 **825-3330**
(FAX: 825-3332)
Debbie Ruger (druger@sjcoe.net) Principal

French Camp (grades: K thru 8; enrollment: 709)
241 East Fourth St., French Camp 95231 **858-3000**
(FAX: 858-3004)
Susan Sanders (ssanders@sjcoe.net) Principal

Golden West (grades: K thru 8; enrollment: 819)
1031 North Main Street, Manteca 95336 **825-3340**
(FAX: 825-3343)
Joanne Balestreri (jbalestreri@sjcoe.net) Principal

Great Valley (grades: K thru 5; enrollment: 1,472 both sites)
4223 McDougald Blvd., Stockton 95206 **234-1130**
(FAX: 858-3094)
Sonya Arellano (sarellano@sjcoe.net)..... Principal

Great Valley Annex (grades: 6 thru 8)
4550 Star Way, Stockton 95206 **234-1130**
(FAX: 234-6715)
Sonya Arellano (sarellano@sjcoe.net)..... Principal

Hafley (Neil) (grades K thru 8; enrollment: 954)
849 Northgate Drive, Manteca 95336 **825-3350**
(FAX: 825-3354)
J. Steven Anderson (sanderson@sjcoe.net) Principal

Knodt (August) (grades K thru 8; enrollment: 1,187)
3939 EWS Woods Blvd., Stockton 95206 **858-3020**
(FAX: 858-3022)
Frank Souza, Jr. (fsouza@sjcoe.net)..... Principal

Komure (George Y.) (grades: K thru 8; enrollment: 1,178)
2121 Henry Long Blvd., Stockton 95206 **234-4812**
(FAX: 234-8763)
Joan A. Steinhauer (jsteinhauer@sjcoe.net) Principal

Lathrop (grades: 3 thru 8; enrollment: 1,144 both sites)
15851 S. Fifth Street, Lathrop 95330 **858-3050**
(FAX: 858-3056)
Katie Peters (kpeters@sjcoe.net)..... Principal

Lathrop Annex (grades: K thru 2)
721 Thomsen Road, Lathrop 95330 **858-3053**
(FAX: 858-3055)
Katie Peters (kpeters@sjcoe.net)..... Principal

Lincoln (grades: K thru 8; enrollment: 751)
750 East Yosemite, Manteca 95336 **825-3380**
(FAX: 825-3387)
Cheryl McIntire-Spiegel (ctincher@sjcoe.net) Principal

Manteca Day School (grades: K-8, 9-12; enrollment: 96)
680 Mikesell Street, Manteca 95336 **239-6282**
(FAX: 239-3863)
Steve Sousa (ssousa@sjcoe.net)..... Principal

Manteca High (grades: 9 thru 12; enrollment: 1,771)
450 East Yosemite, Manteca 95336 **825-3150**
(FAX: 825-3158)
R. Stephen Winter (rwinter@sjcoe.net)..... Principal

McParland (George) (grades: 3 thru 8; enrollment: 1,179 both sites)
1601 Northgate Drive, Manteca 95336 **825-3390**
(FAX: 825-3394)
Dale Borgeson (dborgeson@sjcoe.net)..... Principal

McParland (George) Annex (grades: K thru 2)
1370 London Avenue, Manteca 95336 **825-4281**
(FAX: 825-5098)
Dale Borgeson (dborgeson@sjcoe.net)..... Principal

New Haven (grades: K thru 8; enrollment: 721)
14600 South Austin, Manteca 95336 **825-3400**
(FAX: 825-3403)
David O'Leary (doleary@sjcoe.net) Principal

Nile Garden (grades: K thru 8; enrollment: 717)
5700 East Nile Road, Manteca 95336 **825-3410**
(FAX: 825-3412)

Joe Cook (jcook@sjcoe.net) Principal

Sequoia (grades: K, 3 thru 8; enrollment: 970 both sites)
710 Martha Street, Manteca 95336 **825-3440**
(FAX: 825-3445)

Jacqui Breitenbucher (jbreitenbucher@sjcoe.net) Principal

Sequoia Annex (Yosemite) (grades 1 thru 2)
737 West Yosemite, Manteca 95336 **825-3480**
(FAX: 825-3485)

Jacqui Breitenbucher (jbreitenbucher@sjcoe.net) Principal

Shasta (grades: K thru 8; enrollment: 817)
751 East Edison, Manteca 95336 **825-3450**
(FAX: 825-3453)

Richard Mello (rmello@sjcoe.net) Principal

Sierra High (grades: 9 thru 12; enrollment: 2,047)
1700 Thomas Street, Manteca 95336 **825-3175**
(FAX: 825-3198)

Frederick Arucan (rarucan@sjcoe.net) Principal

Veritas (grades: K thru 8; enrollment: 354)
1600 Pagola Street, Manteca 95337 824-9100
(FAX: 824-9449)

Tracie L. Crawford (tcrawford@sjcoe.net) Principal

Weston Ranch High (grades: 9 thru 12; enrollment: 1,094)
4606 McCuen Avenue, Stockton 95206 **982-5387**
FAX: 982-5765)

Clara Schmiedt (cshmiedt@sjcoe.net) (Interim) Principal

Widmer, Joseph, Jr. (grades: K thru 8; enrollment: 1,015)
751 Stonebridge Lane, Lathrop 95330 **858-0650**
(FAX: 858-4414)

Suzan Turner (sturner@sjcoe.net) Principal

Woodward (Walter) (grades K thru 8; enrollment: 690)
575 Tannehill Drive, Manteca, 95337 **824-0633**
(FAX: 824-8783)

Roger Goatcher (rgoatcher@sjcoe.net) Principal

New Hope Elementary School District

Trustees meet on the third Monday of each month

Leonard Clark President
Jose Torres..... Vice-President
Jane Springmeyer..... Clerk
Rozi Casquero..... Member
vacant Member

SCHOOL

New Hope (grades: K thru 8; enrollment: 219)

P. O. Box 238, Thornton 95686

794-2376

(FAX: 794-2230)

Joanne Oien (joien@sjcoe.net) Superintendent/Principal

New Jerusalem Elementary School District

Trustees meet the second Tuesday of each month

Greg Williamson President
Chuck Petz Clerk
Stephen Bogetti..... Member

SCHOOL

New Jerusalem (grades: K thru 8; enrollment: 210)

31400 South Koster Road, Tracy 95304

835-2597

(FAX: 835-2613)

Dennis Boyer (dboyer@sjcoe.net)..... Superintendent

David Thoming (dthoming@sjcoe.net) Principal

Special Education..... 830-7167

Oak View Union Elementary School District

Trustees meet the third Thursday of each month

Greg Rausser President
Stanley Seifert Clerk
Mark George Member
Mark Huft..... Member
Jeanne Pearson Member

SCHOOL

Oak View (grades: K thru 8; enrollment: 351)

7474 East Collier Road, Acampo 95220

368-0636

(FAX: 368-9319)

William Chiechi (bchiechi@sjcoe.net) Superintendent/Principal

Deborah Anderson (danderson@sjcoe.net) Vice-Principal

Ripon Unified School District
Trustees meet the second Monday of each month

David Withycombe, Area Five..... President
Frank Ferral, Area Four..... Vice-President
Carla Travaille, Area Two Clerk
Larry Stewart, Area Three
Claudia Nepote, Area One

ADMINISTRATION
304 North Acacia Avenue, Ripon 95366
599-2131 (FAX: 599-6271)

Leo M. Zuber (lzuber@sjcoe.net)..... Superintendent
Terry Shireman (tshireman@sjcoe.net) Director, Educational Services
Lisa Bojé (lboje@sjcoe.net)..... Director, Curriculum and Instruction

SCHOOLS

Colony Oak (grades: K thru 8; enrollment: 475)
22241 So. Murphy Road, Ripon 95366 **599-7145**

Mary Lou Kahl (mkahl@sjcoe.net)..... Principal

Community Day/Alternative (grades: 9 thru 12; enrollment: 10)
729 W. Main Street, Ripon 95366 **599-2131**

Leo M. Zuber (lzuber@sjcoe.net)..... Principal

Park View (grades: K thru 3; enrollment: 135)
751 Cindy Drive, Ripon 95366 **599-1882**
(FAX: 599-1886)

Terry Shireman (tshireman@sjcoe.net) Principal

Ripon (grades: K thru 8; enrollment: 460)
509 West Main Street, Ripon 95366 **599-4225**
(FAX: 599-8725)

Mike Larson (mlarson@sjcoe.net)..... Principal

Ripon Adult (enrollment: 50)
304 North Acacia Avenue, Ripon 95366 **599-2131**

Lisa Bojé (lboje@sjcoe.net)..... Principal

Ripon High (grades: 9 thru 12; enrollment: 990)
 301 North Acacia Avenue, Ripon 95366 **599-4287**
 (FAX: 599-6410)

Jeff Frase (jfrase@sjcoe.net)..... Principal

Ripona (grades: K thru 8; enrollment: 475)
 415 East Oregon Street, Ripon 95366 **599-4104**

Warren Council (wcouncil@sjcoe.net)..... Principal

Weston (grades: K thru 8; enrollment: 501)
 1660 Stanley Drive, Ripon 95366 **599-7113**
 (FAX: 599-4063)

Kathryn Coleman (kcoleman@sjcoe.net)..... Principal

***San Joaquin Delta
 Community College District***

Trustees meet the first and third Tuesday of each month
 954-5018 (FAX: 954-5644)

Janet Rivera, Area Three (Rural Stockton)..... President
 Ted Simas, Area Seven (Manteca, Escalon) Vice-President
 Maria Elena Serna, Area Four (Lodi) Clerk
 Anthony E. Bugarin, Area One (South Stockton)
 Leo Burke, Area Two (North Stockton)
 Greg McCreary, Area Six (Tracy)
 Dan S. Parises, Area Five (North San Joaquin County, Galt, Rio Vista, Calaveras)

EXECUTIVE OFFICERS

5151 Pacific Avenue, Stockton 95207
954-5018 (FAX: 954-5644)

Raul RodriguezSuperintendent/President **954-5018**
 (rrodriguez@deltacollege.edu)

Della Condon Assistant Superintendent/Vice-President, **954-5047**
 (dcondon@deltacollege.edu) Instructional Services

John Williams..... Vice-President, Student Services **954-5632**
 (jwilliams@deltacollege.edu)

Andy Dunn..... Vice-President, Business Services **954-5022**
 (adunn@deltacollege.edu)

Kim Myers Vice President of Human Resources **954-5012**
 (kmyers@deltacollege.edu) and Employee Relations

Kathy Hart..... Dean, Planning and Regional Education **954-5039**
 vacantDean, General Education and Transfer **954-5631**
 (@deltacollege.edu)

Hazel Hill Dean, Workforce and Economic Development **954-5093**
 (hhill@deltacollege.edu)

Stockton Unified School District

Trustees meet the second and fourth Tuesday of each month

Edward R. Garcia, Area One.....	President
Anthony Silva, Area Three	Vice-President
Sarah Bowden, Area Four	Member
Glen A. Dolberg, Area Seven.....	Member
Louis Gonzales, Area Two	Member
Venice Holladay, Area Five.....	Member
Katrina L. Rios, Area Six	Member

ADMINISTRATION

701 North Madison Street, Stockton 95202

		<u>FAX #</u>
Carl Toliver (Interim) Superintendent (ctoliver@stockton.k12.ca.us)	933-7070	(933-7071)
Manuel IsquierdoDeputy Superintendent, (misquierdo@stockton.k12.ca.us) Educ. Services	933-7035	(933-7036)
Marilyn Domingo.....Assistant Superintendent, (mdomingo@stockton.k12.ca.us) Business Services	933-7010	(933-7011)
M. Allyn BulzomiAssistant Superintendent, (abulzomi@stockton.k12.ca.us) Human Resources	933-7065	(933-7066)
Wayne Martin Exec.Director, Fiscal Services (wmartin@stockton.k12.ca.us)	933-7055	(933-7101)
Art Hand Exec.Director, Support Services (ahand@stockton.k12.ca.us)	933-7140	(933-7051)
Jess Serna.....Director, Labor Relations (jserna@stockton.k12.ca.us)	933-7065	(933-7066)
Tami Stoller..... Personnel Optns. and Equal Emplmt. (tstoller@stockton.k12.ca.us) Compliance Coord.	933-7065	(933-7066)
Dianne Barth..... Community Relations Officer (dbarth@stockton.k12.ca.us)	933-7025	(933-7071)
Don Swartz..... Chief of Police (dswartz@stockton.k12.ca.us)	933-7085	(933-0218)
Essa Allred Director, Secondary Education (eallred@stockton.k12.ca.us)	933-7115	(933-7036)
Maria Sofia Robledo.....Director, Elementary Education (srobledo@stockton.k12.ca.us)	933-7040	(933-7036)
Daniel Wright.....Director, Elementary Education (dwright@stockton.k12.ca.us)	933-7040	(469-3681)
Kate Williams..... Director, Research & Evaluation (kwilliams@stockton.k12.ca.us)	933-7105	(463-5184)
Michael Lyons.....Director, Student Services (mlyons@stockton.k12.ca.us)	933-7130	(933-7131)
Adolfo Melara..... Director, Program Improvement (amelara@stockton.k12.ca.us)	933-7130	(469-3681)
Lisa Kotowski, Administrator, State & Federal Programs (lkotowski@stockton.k12.ca.us)	933-7470	(953-7471)
JoAnn Olmsted.....Director, Curriculum & (jolmsted@stockton.k12.ca.us) Staff Development	933-7030	(933-7031)

Katarin Jurich.....	Assistant Director, Curriculum & (kjurich@stockton.k12.ca.us) Professional Dev.	933-7075	(933-7076)
Susan Hogue.....	Director, Special Education (shogue@stockton.k12.ca.us)	933-7120	(933-7121)
vacant	Administrator, Special Education @stockton.k12.ca.us)	933-7120	(933-7121)
vacant	Administrator, Child Development (@stockton.k12.ca.us)	933-7380	(933-7381)
Julie Penn	Administrator, Child Welfare and Attendance, Summer School, After School Program (jpenn@stockton.k12.ca.us)	933-7130	(933-7021)
M. Christie Kelley.....	District Tutoring Coordinator, (ckelley@stockton.k12.ca.us) Student Services	933-7130	(933-7131)
Gayle Asuncion.....	Administrator, Health Services (gasuncion@stockton.k12.ca.us)	933-7060	(933-7061)
Robert Sahli	Administrator, Instructional Technology (rsahli@stockton.k12.ca.us)	933-7030	(933-7031)
Bonnie Mansfield	Grant Writer, Research & (bmansfield@stockton.k12.ca.us) Evaluation	933-7105	(463-5184)
Eliza "Raquel" Arata	Grant Writer, Research & (rarata@stockton.k12.ca.us) Evaluation	933-7105	(463-5184)
David Farley.....	Grant Compliance Officer; Research & (dfarley@stockton.k12.ca.us) Evaluation	933-7105	(463-5184)
Dean Gorby	Coordinator, Music Education (dgorby@stockton.k12.ca.us)	933-7030	(933-7031)
Janet Yarbrough.....	Coordinator, District Step Up Prog. (jyarbrough@stockton.k12.ca.us)	933-7130	(933-7131)
Nanci Holtz	Coordinator, District Mathematics & (nholtz@stockton.k12.ca.us) Science Partnership	933-7030	(956-5937)
Cassandra Hernandez-Vives.....	Mentor & Community (chernandez-vives@stockton.k12.ca.us) Serv. Coord.	933-7030	(956-4892)
Sergio Betancourt.....	Compliance Analyst, (sbetancourt@stockton.k12.ca.us) Educational Svcs.	933-7100	(933-7101)
Christina Torres-Peters.....	Compliance Analyst, (cpeters@stockton.k12.ca.us) Educational Services	933-7100	(933-7101)
Karen Robbins... ..	Director, Budget and Accounting (krobbins@stockton.k12.ca.us)	933-7055	(933-7011)
Stephen Hellmer.....	Director, Information Services (shellmer@stockton.k12.ca.us)	933-7090	(933-7091)
vacant	Director, Child Nutrition/Food Services (@stockton.k12.ca.us)	933-7015	(933-7016)
Cecil Tomlin.....	Director, Transportation (ctomlin@stockton.k12.ca.us)	933-7145	(933-7146)
Eugene Wyllie	Principal Auditor (gwyllie@stockton.k12.ca.us)	933-7010	(933-7011)
James O'Neill	Chief Accountant (joneill@stockton.k12.ca.us)	933-7005	(463-2966)
Steve Breakfield	Facilities Planner (sbreakfield@stockton.k12.ca.us)	933-7045	(933-7046)

William Shook Risk Manager (wshook@stockton.k12.ca.us)	933-7110	(953-4621)
Ivan Costa Purchasing Manager (icosta@stockton.k12.ca.us)	933-7095	(933-7096)
Mark Kralj..... Manager, Building Division (mkralj@stockton.k12.ca.us)	933-7050	(933-7051)
Jose Jimenez..... Manager, Custodial and Grounds (jjimenez@stockton.k12.ca.us)	933-7050	(933-7051)
Mitchell Slater..... Manager, Mechanical Division (mslater@stockton.k12.ca.us)	933-7050	(933-7051)
Sam Matsuoka..... Manager, Scheduled (smatsuoka@stockton.k12.ca.us) Maintenance Team	933-7050	(933-7051)
Bill Lindemann Construction/Project Manager (blindemann@stockton.k12.ca.us)	933-7045	(933-7046)
Roy Knight..... Safety Coordinator (rknight@stockton.k12.ca.us)	933-7110	(953-4621)
Legal Services..... (mcarr@stockton.k12.ca.us)	933-7070	(933-7071)

SCHOOLS

(MTYRE - Multi-track Year-round Education)
(STYRE - Single-track Year-round Education)

Adams (grades: PK thru 6; enrollment: 635) 6402 Inglewood Avenue, Stockton 95207	933-7155	(FAX: 952-9208)
Pam Whitted (pwhitted@stockton.k12.ca.us).....		Principal
August (grades: PK thru 6; enrollment: 674) 2101 Sutro Avenue, Stockton 95205	933-7160	(FAX: 463-1179)
Becky Potten (bpotten@stockton.k12.ca.us).....		Principal
Bush (grades: K thru 6; enrollment: 608) (MTYRE) 5420 Fred Russo Drive, Stockton 95212	933-7350	(FAX: 473-9792)
Sylvia Ulmer (sulmer@stockton.k12.ca.us).....		Principal
Chavez (Cesar) High (grades: 9 thru 12; enrollment: 1,460) 2929 Windflower Lane, Stockton 95212	933-7480	(FAX: 933-7036)
vacant (@stockton.k12.ca.us).....		Principal
Cleveland (grades: K thru 6; enrollment: 781) (MTYRE) 20 East Fulton Street, Stockton 95204	933-7165	(FAX: 943-6592)
Patricia Busher (pbusher@stockton.k12.ca.us).....		Principal

Community Day (grades: 6 thru 12; enrollment: 116)
1144 East Channel St., Stockton 95205 **933-7340**
(FAX: 933-7341)
Elena Molina (emolina@stockton.k12.ca.us)..... Administrator

Edison High (grades: 9 thru 12; enrollment: 2,729)
1425 South Center Street, Stockton 95206 **933-7425**
(FAX: 942-2106)
Mark Hagemann (mhagemann@stockton.k12.ca.us)..... Principal

El Dorado (grades: PK thru 6; enrollment: 954) (MTYRE)
1540 North Lincoln Street, Stockton 95204 **933-7175**
(FAX: 465-4358)
Antonio Jimenez (ajimenez@stockton.k12.ca.us)..... Principal

Elmwood (grades: PK thru 6; enrollment: 914)
840 South Cardinal Avenue, Stockton 95205 **933-7180**
(FAX: 465-1042)
John Semillo (jsemillo@stockton.k12.ca.us)..... Principal

Fillmore (grades: K thru 6; enrollment: 854)
2644 East Poplar Street, Stockton 95205 **933-7185**
(FAX: 467-3672)
Gina Hall (ghall@stockton.k12.ca.us)..... Principal

Franklin High (grades: 9 thru 12; enrollment: 3,176)
300 North Gertrude Avenue, Stockton 95215 **933-7435**
(FAX: 464-4708)
Scott Luhn (sluhn@stockton.k12.ca.us)..... Principal

Fremont Middle (grades: 7 and 8; enrollment: 1,429)
2021 East Flora Street, Stockton 95205 **933-7385**
(FAX: 466-7342)
Marlesse Cavazos (mcavazos@stockton.k12.ca.us)..... Acting Principal

Garfield (grades: PK thru 6; enrollment: 269)
1670 East Sixth Street, Stockton 95206 **933-7190**
(FAX: 463-6076)
Michael Sousa (msousa@stockton.k12.ca.us)..... Principal

Grant (grades: K thru 6; enrollment: 236)
1800 South Sutter Street, Stockton 95206 **933-7195**
(FAX: 943-7716)
Suzanne Agbulos-Loera (sloera@stockton.k12.ca.us)..... Administrator

Grunsky (grades: PK thru 6; enrollment: 747) (MTYRE)
1550 School Street, Stockton 95205 **933-7200**
(FAX: 467-3190)
Teresa Oden (toden@stockton.k12.ca.us)..... Principal

Hamilton Middle (grades: 7 and 8; enrollment: 1,403)
2245 East Eleventh Street, Stockton 95206 **933-7395**
(FAX: 464-4851)
Gurmel Singh (gsingh@stockton.k12.ca.us) Principal

Harrison (grades: PK thru 6; enrollment: 629)
3203 Sanguinetti Lane, Stockton 95205 **933-7205**
(FAX: 948-3345)
Kit Saling (ksaling@stockton.k12.ca.us)..... Principal

Hazelton (grades: PK thru 6; enrollment: 771)
535 West Jefferson Street, Stockton 95206 **933-7210**
(FAX: 465-5925)
Ray Schramm (rschramm@stockton.k12.ca.us)..... Principal

Hoover (grades: K thru 6; enrollment: 704) (STYRE)
2900 Kirk Avenue, Stockton 95204 **933-7215**
(FAX: 943-6207)
Janna Schumacher (jschumacher@stockton.k12.ca.us) Principal

Huerta (Dolores) (grades: K thru 6; enrollment: 441)
1644 South Lincoln, Stockton 95206 **933-7220**
(FAX: 933-7221)
Sandra Lepe (slepe@stockton.k12.ca.us) Principal

Institute of Business Management and Law (grades 9 thru 11 enrollment: 245)
6650 Inglewood Avenue, Stockton 95207 **933-7475**
(FAX: 472-7841)
Ron Huebert (rhuebert@stockton.k12.ca.us).....Principal

Kennedy (grades: PK thru 6; enrollment: 739)
630 West Ponce de Leon, Stockton 95210 **933-7225**
(FAX: 474-6449)
Eugene Jackson (ejackson@stockton.k12.ca.us)..... Principal

King (grades: PK thru 6; enrollment: 999)
2640 East Lafayette Street, Stockton 95205 **933-7230**
(FAX: 466-6527)
Linda Luna (lluna@stockton.k12.ca.us)..... Principal

Kohl Open (grades: K thru 6; enrollment: 178)
4115 N. Crown, Stockton 95207 **933-7235**
(FAX: 472-7425)
Lee West (bwest@stockton.k12.ca.us) Principal

Madison (grades: K thru 6; enrollment: 820)
2939 Mission Road, Stockton 95204 **933-7240**
(FAX: 942-0438)
Mary Adams-Moore (madams@stockton.k12.ca.us) Principal

Marshall Middle (grades: 7 and 8; enrollment: 1,371)
1141 Lever Boulevard, Stockton 95206 **933-7405**
(FAX: 466-4962)
Ron Small (rsmall@stockton.k12.ca.us) Principal

McKinley (grades: PK thru 6; enrollment: 783)
30 West Ninth Street, Stockton 95206 **933-7245**
(FAX: 466-7682)
Danielle Valtierra (dvaltierra@stockton.k12.ca.us)..... Principal

Model Alternative/Continuation (grades: 9 thru 12; enrollment: 539)
22 South Van Buren, Stockton 95203 **933-7375**
(FAX: 469-3740)
Pat Hague (phague@stockton.k12.ca.us) Principal

Monroe (grades: PK thru 6; enrollment: 570)
2236 East Eleventh Street, Stockton 95206 **933-7250**
(FAX: 948-2648)
Ruben Garza (rgarza@stockton.k12.ca.us)..... Principal

Montezuma (grades: PK thru 6; enrollment: 1,048) (MTYRE)
2843 Farmington Road, Stockton 95206 **933-7255**
(FAX: 456-4036)
Adrienne Machado (amachado@stockton.k12.ca.us)..... Principal

Nightingale (grades: PK thru 6; enrollment: 440)
1721 E. Carpenter Road, Stockton 95206 **933-7260**
(FAX: 234-1850)
vacant (@stockton.k12.ca.us) Principal

Pulliam (grades: PK thru 6; enrollment: 650) (MTYRE)
230 Presidio Way, Stockton 95207 **933-7265**
(FAX: 473-3540)
Vendetta Brown (vbrown@stockton.k12.ca.us) Principal

Rio Calaveras (grades: K thru 6; enrollment: 1,049) (MTYRE)
1819 East Bianchi Rd., Stockton 95210 **933-7270**
(FAX: 957-5182)
Carol Becker (cbecker@stockton.k12.ca.us)..... Principal

Roosevelt (grades: PK thru 6; enrollment: 680)
776 South Broadway Avenue, Stockton 95205 **933-7275**
(FAX: 946-0657)
Sydney Thacher (sthacher@stockton.k12.ca.us) Principal

San Joaquin (grades: K thru 6; enrollment: 1,052) (MTYRE)
2020 S. Fresno St., Stockton 95206 **933-7280**
(FAX: 467-7057)
Nicholle Medina (nmedina@stockton.k12.ca.us)..... Principal

School for Adults (enrollment: 2,000)
1525 Pacific Avenue, Stockton 95204 **933-7455**
(FAX: 464-4917)
Carol Hirota (chirota@stockton.k12.ca.us) Principal

Stagg High (grades: 9 thru 12; enrollment: 3,033)
1621 Brookside Road, Stockton 95207 **933-7445**
(FAX: 954-9037)
Edward Burns (eburns@stockton.k12.ca.us) Principal

Stockton Skills (grades: K thru 8; enrollment: 1,050)
349 East Vine Street, Stockton 95202 **933-7170**
(FAX: 466-3711)
Margaret Johnson (mjohnson@stockton.k12.ca.us) Principal

Taft (grades: PK thru 6; enrollment: 498)
419 Downing Avenue, Stockton 95206 **933-7285**
(FAX: 982-4257)
Dee Johnson (djohnson@stockton.k12.ca.us) Principal

Taylor Skills (grades: PK thru 6; enrollment: 605) (MTYRE)
1101 Lever Boulevard, Stockton 95206 **933-7290**
(FAX: 462-3427)
Jacquelyne Green (jgreen@stockton.k12.ca.us) Principal

Tyler Skills (grades: PK thru 6; enrollment: 751) (MTYRE)
3830 Webster Avenue, Stockton 95204 **933-7295**
(FAX: 943-7693)
Louie Campos (lcampos@stockton.k12.ca.us) Principal

Urbani Institute of Language Development (grades: 4 thru 8; enrollment: 218)
640 North San Joaquin Street, Stockton 95202 **933-7370**
(FAX: 933-7371)
Olivia Castillo (ocastillo@stockton.k12.ca.us) Administrator

Valenzuela (grades: K thru 6; enrollment: 241)
1424 N. San Joaquin, Stockton 95202 **933-7300**
(FAX: 463-1184)
Margarito Ortega (mortega@stockton.k12.ca.us) Administrator

Van Buren (grades: PK thru 6; enrollment: 473)
1628 East Tenth Street, Stockton 95206 **933-7305**
(FAX: 466-3705)
Yanik Ruley (yruley@stockton.k12.ca.us) Principal

Victory (grades: PK thru 6; enrollment: 778) (STYRE)
1838 West Rose Street, Stockton 95203 **933-7310**
(FAX: 948-2259)
Mitchell Kanter (mkanter@stockton.k12.ca.us) Principal

Walton Special (enrollment: 88)
 4131 North Crown Avenue, Stockton 95207 **933-7315**
 (FAX: 952-5784)
 Thomas Whitesides (twhitesides@stockton.k12.ca.us)..... Principal

Washington (grades: K thru 6; enrollment: 219)
 1735 West Sonora, Stockton 95203 **933-7320**
 (FAX: 943-6209)
 Laurie Leffler (lleffler@stockton.k12.ca.us)..... Principal

Weber Institute of Applied Sciences and Technology
 (grades 11-12; enrollment: 391)
 302 West Weber Avenue, Stockton 95203 **933-7330**
 (FAX: 466-7548)
 Knute Momberg (kmomberg@stockton.k12.ca.us)..... Director

Webster Middle (grades: 7 and 8; enrollment: 1,278)
 2725 Michigan Avenue, Stockton 95204 **933-7415**
 (FAX: 948-2960)
 Margaret Salazar-Huerta (msalazar-huerta@stockton.k12.ca.us)..... Principal

Wilson (grades: K thru 6; enrollment: 391)
 150 East Mendocino, Stockton 95204 **933-7325**
 (FAX: 948-3480)
 Terri Hedden (thedden@stockton.k12.ca.us)..... Principal

Tracy Unified School District

Trustees meet the second and fourth Tuesday of each month

Kelly Lewis..... President
 Gerard Machado..... Vice-President
 Gregg Crandall..... Clerk
 Joan Feller..... Member
 Tom Hawkins..... Member
 Bill Swenson..... Member
 James Vaughn..... Member

ADMINISTRATION

1875 W. Lowell Ave., Tracy 95376-4095

District Education Center Telephone: **830-3200**

		<u>FAX#</u>
James Franco..... Superintendent	830-3201	(830-3204)
(jfranco@tusd.net)		
Casey J. GoodallAssistant Superintendent, Business	830-3230	(830-3234)
(cgoodall@tusd.net)		
Sheila Harrison.....Asst. Superintendent, Instruction	830-3202	(830-3209)
(sharrison@tusd.net)		

James Mousalimas Asst. Supt, Human Resources (jmousalimas@tUSD.net)	830-3260	(830-3264)
Rebecca Frame..... Dir, Curriculum/Student Services (rframe@tUSD.net)	830-3280	(830-3284)
Denise Wakefield Director, Facilities (dwakefield@tUSD.net) and Construction	830-3245	(830-3249)
Kerry Johnson Director, Information Services (kjohnson@tUSD.net) & Educational Technology	831-5555	(830-3220)
Hal Kushins..... Director, Curriculum/Special Projects (hkushins@tUSD.net)	830-3275	(830-3209)
vacant Director, Alternative Programs.....	830-3210	(830-3209)
(@tUSD.net)		
Nancy Flynn..... Director, Special Education (nflynn@tUSD.net)	830-3270	(830-3274)
Janice Bussey Director, Staff Development (jbussey@tUSD.net)	831-5200	(831-5506)
vacant Dir, Financial Services	830-3235	(830-3239)
(@tUSD.net)		
Gary Jayne Dir, Materials Management (gjayne@tUSD.net)	830-3240	(830-3239)
Kathy Green Dir, Instructional Media Center (kgreen@tUSD.net)	831-5082	(831-5572)
John Heerema..... Director, Transportation (jheerema@tUSD.net)	831-5051	(830-3271)
Jessica Wakefield Communication Specialist (jwakefield@tUSD.net)	830-3201	(830-3204)

SCHOOLS

Bohn (Louis A.) (grades: K thru 5; enrollment: 550) 350 E. Mt. Diablo, Tracy 95376	831-5335	(FAX: 831-5064)
Linda Boragno-Dopp (lboragno@tUSD.net).....		Principal
Central (grades: K thru 5; enrollment: 450) 1370 Parker Avenue, Tracy 95376	831-5300	(FAX: 831-5309)
Donna Sonnenburg (dsonnenburg@tUSD.net).....		Principal
Delta Island (grades: K thru 8; enrollment: 168) 11022 West Howard Road, Stockton 95206	953-5900	(FAX: 953-5905)
Ramona Soto (rsoto@tUSD.net).....		Principal
Duncan-Russell High (Continuation: grades 10 thru 12; enrollment: 123) 164 West Grantline Road, Tracy 95376	831-5220	(FAX: 831-5222)
Cynthia Johannes (cjohannes@tUSD.net).....		Principal

Freiler (Art) (grades: K thru 8; enrollment: 1,000) (YRE)
 2421 West Lowell Ave., Tracy 95376 **831-5170**
 (FAX: 831-5177)
 Marylee Barron (mbarron@tUSD.net)..... Principal

Hirsch (Wanda) (grades: K thru 5; enrollment: 800) (YRE)
 1280 Dove Street, Tracy 95376 **831-5110**
 (FAX: 831-5118)
 Jon Fine (jfine@tUSD.net)..... Principal

Institute for Global Commerce & Government (grades: 9 thru 12; enroll.: 140)
 1904 N. Corral Hollow Rd., Tracy 95376 **830-3380**
 (FAX: 830-3381)
 Janice Bussey (jbussey@tUSD.net)..... Principal

Jacobson (Melville S.) (grades: K thru 5; enrollment: 700) (YRE)
 1750 W. Kavanagh Avenue, Tracy 95376 **830-3315**
 (FAX: 830-3316)
 Margaret Barnett (mbarnett@tUSD.net)..... Principal

Kelly (George) (grades: K thru 8; enrollment: 965) (YRE)
 535 Mabel Josephine Drive, Tracy 95377 **831-5000**
 (FAX: 831-5031)
 Denise Laven (dlaven@tUSD.net)..... Principal

McKinley (grades: K thru 5; enrollment: 500)
 800 West Carlton, Tracy 95376 **830-3319**
 (FAX: 830-3320)
 Laurie Fracolli (lfracolli@tUSD.net)..... Principal

Monte Vista Middle (grades: 6 thru 8; enrollment: 1,000)
 751 West Lowell, Tracy 95376 **831-5260**
 (FAX: 831-5580)
 Steve Donahue (sdonahue@tUSD.net)..... Principal

North (grades: K thru 8; enrollment: 780)
 2875 Holly Drive, Tracy 95376 **831-5272**
 (FAX: 831-5275)
 Fred Medina (fmedina@tUSD.net)..... Principal

Poet-Christian (Gladys) (grades: K thru 8; enrollment: 689)
 1701 S. Central Ave. Tracy 95376 **831-5252**
 (FAX: 831-5252)
 William "Bill" Maslyar (wmaslyar@tUSD.net)..... Principal

South (grades: 3 thru 5; enrollment: 545)
 500 W. Mt. Diablo Road, Tracy 95376 **831-5214**
 (FAX: 831-5350)
 Carol Anderson-Woo (canderson@tUSD.net)..... Principal

Tracy Joint Union High (grades: 9 thru 12; enrollment: 2,520)
 315 East Eleventh Street, Tracy 95376 **831-5100**
 (FAX: 831-5117)
 vacant@tusd.net) Principal

Tracy Adult (enrollment: 450)
 315 East Eleventh Street, Tracy 95376 **830-3384**
 (FAX: 830-3385)
 Walter Gouveia (wgouveia@tusd.net) Principal

Villalovoz (Louis J.) (grades: K thru 5; enrollment: 600)
 1550 Cypress Drive, Tracy 95376 **831-5400**
 (FAX: 831-5088)
 Tony Serna (tserna@tusd.net) Principal

West (Merrill F.) High (grades 9 thru 12; enrollment: 3,000)
 1775 W. Lowell Avenue, Tracy 95376 **831-5430**
 (FAX: 831-5433)
 Herman Calad (hcalad@tusd.net) Principal

West Park (grades: K thru 2; enrollment: 495)
 500 Mt. Diablo Road, Tracy 95376 **831-5320**
 (FAX: 831-5351)
 Dora Contreras (dcontreras@tusd.net) Principal

Williams (Earle E.) Middle (grades: 6 thru 8; enrollment: 1,420)
 1600 Tennis Lane, Tracy 95376 **831-5289**
 (FAX: 831-5294)
 Barbara Montgomery (bmontgomery@tusd.net) Principal

Willow Community Day (grades: 7 thru 11; enrollment: 33)
 2525 Tracy Blvd, Tracy 95376 **830-6054**
 (FAX: (call before sending) 830-6054)
 Rebecca Frame (rfram@tusd.net) Principal

Charter Schools

Aspire
 University Public School (grades: K thru 5; enrollment: 352)
 10038 E. Hwy. 99, Stockton 95212 **931-5399**
 (FAX: 931-5185)
 Karla Fachner (karla.fachner@aspirepublicschools.org) Principal

Benjamin Holt College Prep Academy (grades: 6 thru 10; enrollment: 405)
3293 E. Morada Lane, Stockton 95212 **955-1477**

(FAX: 955-1472)

Jeannie Griffith (jeannie.griffith@aspirepublicschools.org)..... Principal

River Oaks Charter (grades: K thru 5; enrollment: 350)
1801 Pyrenees Avenue, Stockton, 95210

956-8100

(FAX: 956-8102)

Ernest Peterson (ernest.peterson@aspirepublicschools.org) Principal

Delta Charter High School (grades: 9 thru 12; enrollment: 250)
31400 South Koster Road, Tracy 95304

830-6363

(FAX: 830-9324)

Mary Vink (mvink@sjcoe.net) Director

Lammersville Charter (grades: K thru 8; enrollment: 20)
16555 West Von Sosten Road, Tracy 95304

835-3478

(FAX: 835-1113)

Rex Tschetter (rtschett@sjcoe.net) Principal

New Jerusalem Charter (grades: K thru 8; enrollment: 160)
31400 South Koster Road, Tracy 95304

830-6789

(FAX: 830-9707)

Mary Vink (mvink@sjcoe.net) Director

Serna (Joe Jr.) Charter (grades: K thru 7; enrollment: 260) (MT)
19 S. Central , Lodi 95240

331-7809

(FAX: 331-7997)

Michael Gillespie (mgillespie@lodiUSD.k12.ca.us) Principal

Tracy Learning Center (grades: K thru 9; enrollment: 425)
Primary - 51 E. Beverly, Tracy 95376

831-5240

Discovery & Millennium
650 W. 10th St., Tracy 95376

831-5090

(FAX: 831-5094)

Virginia Stewart (vstewart@tUSD.net).....Executive Director

Venture Academy (grades: K thru 12; enrollment: 600)
Student Leadership & Performing Arts

Venture Land (K thru 3)

Venture Integrated Technology Academy

Venture Academy Technology Prep

Durham Ferry Outdoor Education Center

Administration: 2829 Transworld Drive, Stockton 95206

468-5940

(FAX: 468-9000)

Kathleen Focacci (kfocacci@sjcoe.net)..... Director

Indexes

Schools

A

Adams Elementary.....	Stockton Unified
Adams (Ansel) Elementary.....	Lodi Unified
Aspire Public School.....	Lodi Unified
August Elementary.....	Stockton Unified

B

Banta Elementary.....	Banta Elementary
Barron (Mable) Elementary.....	Lincoln Unified
Bear Creek High.....	Lodi Unified
Beckman Elementary.....	Lodi Unified
Bohn (Louis A.) Elementary.....	Tracy Unified
Borchardt (Lois E.) Elementary.....	Lodi Unified
Brockman (Stella) Elementary.....	Manteca Unified
Brookside Elementary.....	Lincoln Unified
Bush Elementary.....	Stockton Unified

C

Calla High.....	Manteca Unified
Central Elementary.....	Tracy Unified
Chavez (Cesar) High School.....	Stockton Unified
Clairmont Elementary.....	Lodi Unified
Clements Elementary.....	Lodi Unified
Cleveland Elementary.....	Stockton Unified
Collegeville Elementary.....	Escalon Unified
Colonial Heights Elementary.....	Lincoln Unified
Colony Oak Elementary.....	Ripon Unified
Community Day.....	Stockton Unified
Community Day/Alternative.....	Ripon Unified
Cowell (Joshua) Elementary.....	Manteca Unified
Creekside Elementary.....	Lodi Unified

D

Davis Elementary.....	Lodi Unified
Delta Charter High.....	New Jerusalem
Delta Island Elementary.....	Tracy Unified
Delta Sierra Middle.....	Lodi Unified
Dent Elementary.....	Escalon Unified
Discovery Charter.....	Tracy Unified
Duncan-Russell High.....	Tracy Unified

E

East Union High.....	Manteca Unified
Edison High	Stockton Unified
El Dorado Elementary.....	Stockton Unified
Elkhorn Elementary	Lodi Unified
Elliott (Brock) Elementary.....	Manteca Unified
El Portal Middle.....	Escalon Unified
Elmwood Elementary.....	Stockton Unified
Escalon High.....	Escalon Unified

F

Farmington Elementary	Escalon Unified
Fillmore Elementary	Stockton Unified
Franklin High.....	Stockton Unified
Fremont Middle	Stockton Unified
French Camp Elementary	Manteca Unified
Freiler (Art) Elementary	Tracy Unified

G

Garfield Elementary.....	Stockton Unified
Glenwood Elementary	Linden Unified
Golden West Elementary	Manteca Unified
Grant Elementary	Stockton Unified
Great Valley Elementary.....	Manteca Unified
Great Valley Elementary Annex.....	Manteca Unified
Grunsky Elementary	Stockton Unified

H

Hafley (Neil) Elementary.....	Manteca Unified
Hamilton Middle.....	Stockton Unified
Harrison Elementary	Stockton Unified
Hawkins Elementary.....	Jefferson Elementary
Hazelton Elementary.....	Stockton Unified
Henderson Community Day	Lodi Unified
Heritage	Lodi Unified
Hirsch (Wanda) Elementary.....	Tracy Unified
Holt Union Elementary	Holt
Hoover Elementary	Stockton Unified
Houston Elementary.....	Lodi Unified
Huerta (Dolores) Elementary.....	Stockton Unified

I

Institute for Global Commerce and Government.....	Tracy Unified
Institute of Business Management and Law.....	Stockton Unified

J

Jacobson (Melville S.)Elementary	Tracy Unified
Jefferson Elementary	Jefferson

K

Kelly (George)	Tracy Unified
Kennedy Elementary.....	Stockton Unified
King Elementary	Stockton Unified
Knodt (August) Elementary.....	Manteca Unified
Knols (Tully C.) Elementary.....	Lincoln Unified
Kohl Open Elementary	Stockton Unified
Komure (George Y.) Elementary	Manteca Unified

L

Lakewood Elementary	Lodi Unified
Lammersville Charter	Lammersville
Lammersville Elementary.....	Lammersville
Landeen (Claudia) Elementary	Lincoln Unified
Larson (Ellereth)	Lodi Unified
Larsson (Sture) High.....	Lincoln Unified
Lathrop Elementary	Manteca Unified
Lathrop Annex	Manteca Unified
Lawrence Elementary	Lodi Unified
Liberty High.....	Lodi Unified
Lincoln Community Day	Lincoln Unified
Lincoln Elementary.....	Lincoln Unified
Lincoln Elementary.....	Manteca Unified
Lincoln High	Lincoln Unified
Linden Elementary.....	Linden Unified
Linden High	Linden Unified
Live Oak Elementary	Lodi Unified
Lockeford Elementary	Lodi Unified
Lodi Adult	Lodi Unified
Lodi Career Education	Lodi Unified
Lodi Children's Center.....	Lodi Unified
Lodi High.....	Lodi Unified
Lodi Middle	Lodi Unified

M

Madison Elementary	Stockton Unified
Mahin (Dorothy J.) (TMR)	Lodi Unified
Manteca Adult Education.....	Manteca Unified
Manteca Day	Manteca Unified
Manteca High.....	Manteca Unified

Marshall Middle.....	Stockton Unified
McAuliffe (Christa) Middle.....	Lodi Unified
McFall (John J.) (TMR).....	San Joaquin County Office of Education
McNair (Ronald E.) High School	Lodi Unified
McKinley Elementary.....	Stockton Unified
McKinley Elementary.....	Tracy Unified
McParland (George) Elementary	Manteca Unified
McParland Annex.....	Manteca Unified
Middle College High.....	Lodi Unified
Millenium High	Charter School
Millswood Middle	Lodi Unified
Model Alternative/Continuation	Stockton Unified
Monroe Elementary	Stockton Unified
Monte Vista Middle	Tracy Unified
Montezuma Elementary	Stockton Unified
Monticello Elementary.....	Jefferson Elementary
Morada Lane Secondary School.....	Aspire
Morada Middle.....	Lodi Unified
Morgan (Julia) Elementary	Lodi Unified
Muir (John) Elementary.....	Lodi Unified

N

Needham.....	Lodi Unified
New Haven Elementary	Manteca Unified
New Hope Elementary.....	New Hope
New Jerusalem Charter	New Jerusalem
New Jerusalem Elementary.....	New Jerusalem
Nichols (Leroy) Elementary	Lodi Unified
Nightingale Elementary	Stockton Unified
Nile Garden Elementary	Manteca Unified
North Elementary.....	Tracy Unified

O

Oak View Union Elementary	Oak View
Oakwood Elementary.....	Lodi Unified
Outdoor Education School.....	Camp Jones' Gulch Redwood Glen

P

Parklane Elementary	Lodi Unified
Plaza Robles High.....	Lodi Unified
Poet-Christian Elementary	Tracy Unified
Pulliam Elementary.....	Stockton Unified

R

Redwood School	Main TMR Office
Reese (Erma B.) Elementary.....	Lodi Unified
Riggio (Don) Elementary.....	Lincoln Unified
Rio Calaveras Elementary.....	Stockton Unified
Ripon Adult.....	Ripon Unified
Ripon Elementary	Ripon Unified
Ripon High.....	Ripon Unified
Ripona Elementary.....	Ripon Unified
River Oaks Charter	Aspire Charter Schools
Roosevelt Elementary	Stockton Unified

S

San Joaquin Delta Community College	San Joaquin Delta College
San Joaquin Elementary.....	Stockton Unified
School for Adults	Stockton Unified
Sequoia Elementary	Manteca Unified
Sequoia Annex	Manteca Unified
Serna (Joe Jr.) Charter.....	Lodi Unified
Shasta Elementary.....	Manteca Unified
Sierra High	Manteca Unified
Sierra Middle	Lincoln Unified
Silva (Manlio)	Lodi Unified
South/West Park Campus Elementary	Tracy Unified
Stagg High	Stockton Unified
Stockton Skills	Stockton Unified
Sutherland Elementary.....	Lodi Unified

T

Taft Elementary.....	Stockton Unified
Taylor Skills Elementary.....	Stockton Unified
Tokay Colony Elementary	Lodi Unified
Tokay High.....	Lodi Unified
Tracy Adult	Tracy Unified
Tracy Joint Union High.....	Tracy Unified
Tracy Learning Center	Charter School
Traina Elementary	Jefferson
Turner Elementary	Lodi Unified
Tyler Skills Elementary.....	Stockton Unified

U

University Public School	Aspire Charter Schools
Urbani Institute of Language Development.....	Stockton Unified

V

Valenzuela Elementary.....	Stockton Unified
Van Allen Elementary	Escalon Unified
Van Buren Elementary	Stockton Unified
Venture Academy	County Office
Veritas	Manteca Unified
Victor Elementary	Lodi Unified
Victory Elementary	Stockton Unified
Village Oaks Elementary	Lincoln Unified
Villalovoz, Louis J. Elementary.....	Tracy Unified
Vinewood Elementary.....	Lodi Unified
Vista High	Escalon Unified

W

Wagner-Holt Elementary	Lodi Unified
Walton Special	Stockton Unified
Washington Development Center	Lodi Unified
Washington Elementary	Stockton Unified
Washington (George) Elementary.....	Lodi Unified
Waterloo Elementary.....	Linden Unified
Waverly Elementary.....	Linden Unified
Weber Institute of Applied Sciences & Technology	Stockton Unified
Webster Middle	Stockton Unified
West (Merrill F.) High.....	Tracy Unified
West Park/South Campus Elementary	Tracy Unified
Weston Elementary	Ripon Unified
Weston Ranch High School	Manteca Unified
Westwood Elementary	Lodi Unified
Wicklund Elementary	Lammersville Unified
Widmer, Joseph Jr. Elementary.....	Manteca Unified
Williams (Earle E.) Middle	Tracy Unified
Williams (John R.) Elementary.....	Lincoln Unified
Willow Community Day.....	Tracy Unified
Wilson Elementary.....	Stockton Unified
Woodbridge Middle	Lodi Unified
Woodward (Walter E) Elementary.....	Manteca Unified

Personnel

A

Abrahamson, George	County Board
Ace, Francisco	San Joaquin Delta College
Adair, Leslie	Monticello - Jefferson
Adams-Moore, Mary	Madison - Stockton Unified
Agbulos-Loera, Suzanne	Grant - Stockton Unified
Alba, John	East Union - Manteca Unified
Alcorn, Diane	Escalon Unified
Allen, Ken	Glenwood - Linden Unified
Allen, Trent	County Office
Allred, S. Essa	Stockton Unified
Amato, Bob	Escalon Unified
Andal, Dean	Lincoln Unified
Anderson, Deborah	Oakview Union
Anderson, J. Steven	Neil Hafley - Manteca Unified
Anderson, Virginia	Clements & Lockeford - Lodi Unified
Anderson-Woo, Carol	South/West Park Campus - Tracy Unified
Andreasen-Grooms, Kimberley	County Office
Anzo, George	Lincoln Unified
Arata, Eliza "Raquel"	Stockton Unified
Arce, Francisco	San Joaquin Delta College
Arellano, Sonya	Great Valley/Annex - Manteca Unified
Arguelles, Johnny	County Office
Arucan, Frederick	Sierra High - Manteca Unified
Asplund, Terry	Sierra Middle - Lincoln Unified
Athey, Kathy	County Office
Atterberry, William	Lodi High - Lodi Unified

B

Badovinac, Michele	County Office
Bagnell, Mike	County Office
Bahr, Gregory	County Office
Baiocchi, Jamie	County Office
Balestreri, Joanne	Golden West - Manteca Unified
Balian, Sherry	Lodi Unified
Barge, Doug	Middle College - Lodi Unified
Barnett, Margaret	Jacobson - Tracy Unified
Barron, Marylee	Art Freiler - Tracy Unified
Barth, Dianne	Stockton Unified
Becker, Carol	Rio Calaveras- Stockton Unified
Bell, Tara	Lincoln High - Lincoln Unified
Bellemare, Shannon	Holt Union

Betancourt, Sergio	Stockton Unified
Bills, Harvey	Lodi Unified
Blomquist, Michael	Adams (Ansel) - Lodi Unified
Blote, Jeri	County Office
Blue, Candace	County Office
Bogetti, Stephen	New Jerusalem
Bojé, Lisa	Ripon Unified
Bond, June	Stockton Unified
Boragno-Dopp, Linda	Bohn - Tracy Unified
Bordner, Celeste	Reese - Lodi Unified
Borgeson, Dale	McParland - Manteca Unified
Bowden, Sarah	Stockton Unified
Boyer, Dennis	New Jerusalem
Brayshaw, Bev	Davis - Lodi Unified
Breakfield, Steve	Stockton Unified
Breitenbucher, Jacqui	Sequoia - Manteca Unified
Brenneise, Sharon	County Office
Bridges, Daniel	County Office
Bridges, Jim	Jefferson
Briggs, Darla	McAuliffe (Christa) - Lodi Unified
Brown, Denise	Vista High - Escalon Unified
Brown, Dennis	Lodi Unified
Brown, Vendetta	Pulliam - Stockton Unified
Brumley, Phil	Escalon Unified
Brunni, Brandie	County Office
Bugarin, Anthony E.	San Joaquin Delta College
Bulzomi, M. Allyn	Stockton Unified
Burke, Leo	San Joaquin Delta College
Burnette, Debbie	Lammersville
Burns, Edward	Stagg High - Stockton Unified
Busher, Patricia	Cleveland - Stockton Unified
Bussey, Janice	Institute/Global Commerce - Tracy Unified

C

Cain, Cheryl	Lincoln Unified
Cajee, Na'eel	Lincoln Unified
Calad, Herman	West High - Tracy Unified
Callahan, Janice	Manteca Unified
Callas, Pete	Manteca Unified
Calonico, Joan	Lincoln Elementary - Lincoln Unified
Campbell, Russ	County Office
Cameron, Charlotte	New Hope
Camp, Daryl	Bear Creek High - Lodi Unified
Campos, Louie	Tyler Skills - Stockton Unified
Canepa, Paul	Lincoln Unified
Carlson, Pete	Jefferson
Carnahan, Diane	County Office
Carroll, Paula	Lodi Unified

Casanega, Len Lodi Unified
Castellanos, Audrey County Office
Castillo, Olivia Urbani Institute - Stockton Unified
Castillo, Zenon County Office
Caton, Al Escalon Unified
Cavasos, Marlesse Fremont Middle - Stockton Unified
Cecchetti, Anne Lodi Unified
Cervantes, Maria Heritage Primary - Lodi Unified
Chiechi, William Oak View Union
Cicolani, Rhonda County Office
Clark, Beverly Lincoln Unified
Clark, Greg County Office
Clark, Leonard New Hope
Cleveland, Leah Lincoln Unified
Cleveland, Tom Lincoln Unified
Coakley, John Lodi Unified
Coburn, Sheri County Office
Cole, J.P. Lammersville
Coleman, Kathryn Weston - Ripon Unified
Colombini, Jay Linden Unified
Collingsworth, Pam El Portal Middle - Escalon Unified
Colwell, Steve Adult Education - Lodi Unified
Condon, Chris County Office
Conrado, Catherine Lodi Unified
Contreras, Dora West Park/South Campus - Tracy Unified
Cook, Joe Nile Garden - Manteca Unified
Cornish, Rick County Office
Costa, Ivan Stockton Unified
Costamagna, Florence Children's Center - Lodi Unified
Council, Warren Ripona - Ripon Unified
Cox, Mary Ann San Joaquin Delta College
Crandall, Gregg Tracy Unified
Crawford, Tracie Veritas - Manteca Unified
Cunningham, Chris Lammersville

D

Davis, Jennifer County Office
Davis, Jim McNair High - Lodi Unified
Davis, Ken Lodi Unified
Davis, Meredith County Office
Dean, Janet Dent - Escalon Unified
Dean, Richard Lodi Unified
deGanna, Debbie Lodi Unified
DeMent, Leah Holt Union
Dei Rossi, Gary F. County Office
Denman, Linda Washington Elem./Washington Dev. Ctr. - Lodi Unified
DePrater, Karen County Office
Dexter, Karyn County Office
Dodge, Michael Manteca Unified
Dolberg, Glen Stockton Unified
Domingo, Marilyn Stockton Unified

Donahue, Steve Monte Vista - Tracy Unified
Douglas, Odie Lodi Unified
Draa, William Banta
Drennen, Kathy Lincoln Unified
Dunn, Andy San Joaquin Delta College

E

Easton, Stewart Lammersville
Edwards, Mark Parklane - Lodi Unified
Engelhart, Bill County Office
Esquer, Kathy Lincoln Unified
Estes, Ron Linden Unified
Evosevich, Gloria Nichols - Lodi Unified

F

Fachner, Karla University Public Schools - Aspire
Fagundes, Suzanne Lincoln Unified
Faith, Dan Silva (Manlio) - Lodi Unified
Farley, David Stockton Unified
Ferral, Frank Ripon Unified
Feller, Joan Tracy Unified
Fine, Jon Hirsch - Tracy Unified
Finton, Paula Jefferson
Fisher, Linda Lincoln Unified
Fite, Sharon Lincoln Unified
Flemmer, Sheree Woodbridge - Lodi Unified
Flowers, Jacqueline County Office
Flynn, Nancy Tracy Unified
Focacci, Kathy County Office
Fong, Maria Lodi Unified
Foster, Beverly County Board
Founts, Mick County Office
Fracolli, Laurie McKinley - Tracy Unified
Frame, Rebecca Willow Community Day - Tracy Unified
Franco, James Tracy Unified
Frase, Jeff Ripon High - Ripon Unified
Frink, Wendy County Office
Fritchen, Dale Manteca Unified
Frontz, Linda Van Allen - Escalon Unified
Fry, Kelly County Office
Fugazi, Christina County Office
Fuglsang, Terry Lodi Unified
Fultz, John Manteca Unified

G

Galvez, Rosie County Office
Garcia, Edward Stockton Unified
Garibaldi, Albert Banta
Garza, Ruben Monroe - Stockton Unified
George, Mark Oak View Union

Gerrity, Allison	Sutherland - Lodi Unified
Geverts, Linda	County Office
Gibbs, Randy	County Office
Gillespie, Michael	Joe Serna, Jr. Charter - Lodi Unified
Gire, Bob	Lodi Unified
Goatcher, Roger	Manteca Unified
Gonzales, Louis	Stockton Unified
Gonzalves, Ivie	Lodi Unified
Goodall, Casey	Tracy Unified
Gorby, Dean	Stockton Unified
Goulart, Sheilah	County Office
Gouveia, Walter	Tracy Adult - Tracy Unified
Grauman, Elliott	Lodi Unified
Green, Jacquelyne	Taylor Skills - Stockton Unified
Green, Kathy	Tracy Unified
Griffith, Jeannie	Aspire Charter School
Grossman, Kelly	County Office
Guillen, Lisa	County Office
Gutierrez, Anthony J.	County Board
Gutierrez, Paul	Manteca Unified

H

Hagedorn, Joaquin	Nightingale - Stockton Unified
Hague, Pat	Model Alternative - Stockton Unified
Hall, Gina	Fillmore - Stockton Unified
Hall, Rebecca	Linden Unified
Halseth, Donald	Manteca Unified
Hamilton, P.J.	County Office
Hamilton, Randy	Linden Unified
Hancock, Ellen	County Office
Hancock, Joe	Lincoln High - Lincoln Unified
Hand, Art	Stockton Unified
Hanson, Sandra	Waterloo - Linden Unified
Hargis, Carrie	Lodi Unified
Harkin, Kevin	Elkhorn - Lodi Unified
Harless, Jake	Lincoln Unified
Harrison, Sheila	Tracy Unified
Hart, Kathy	San Joaquin Delta College
Hashisaka, Ron	Sutherland - Lodi Unified
Hawkins, Tom	Tracy Unified
Hayes, Lisa	Beckman - Lodi Unified
Hedden, Terri	Wilson - Stockton Unified
Heerema, John	Tracy Unified
Hellmer, Stephen	Stockton Unified
Hernandez, Carlos	Holt Union
Hernandez-Vivas, Cassandra	Stockton Unified
Hill, Hazel	San Joaquin Delta College
Hinton, Kent	County Office
Hirota, Carol	School for Adults - Stockton Unified

Hisaka, Julie Lincoln Unified
Hitchcock, Susan Clairmont - Lodi Unified
Hodgson, Janesse County Office
Hoffman, Chris Tokay High - Lodi Unified
Hogue, Susan Stockton Unified
Holladay, Venice Stockton Unified
Holland, Charles Holt Union
Hollingsworth, Rod Plaza Robles High - Lodi Unified
Holmerud, Debbi Lincoln High - Lincoln Unified
Holtsman, Howard Adult Education - Manteca Unified
Holtz, Nancy Stockton Unified
Hopman, Debra Jefferson
Horton, Jim County Office
Huebert, Ron Institute of Business Management & Law - Stockton Unified
Huft, Mark Oak View Union
Hunter, Bev County Office
Huyett, William Lodi Unified

I

Iida, Susan County Office
Irvin, Denise County Office
Isquierdo, Manuel Stockton Unified

J

Jackson, Eugene Kennedy - Stockton Unified
Jacobs, Gregory County Office
Jardine, Carlin County Office
Jayne, Gary Tracy Unified
Jefferson, Irvin Lodi Unified
Jimenez, Antonio El Dorado - Stockton Unified
Jimenez, Jose Stockton Unified
Johannes, Cynthia Duncan-Russell High - Tracy Unified
Johannsen, Joel Escalon High- Escalon Unified
Johnson, Dee Taft - Stockton Unified
Johnson, Kerry Tracy Unified
Johnson, Margaret Stockton Skills - Stockton Unified
Johnson, Peter Lodi Unified
Johnson, Steven Mahin - Lodi Unified
Johnston, Barbara Lodi Unified
Jones, Richard County Office
Jurich, Katarin Stockton Unified
Justice-Brown, Joan County Office

K

Kahl, Mary Lou Colony Oak - Ripon Unified
Kahl, Phyllis McCandless, Sture Larsson, Comm. Day, ILC - Lincoln Unified

Kapic, Linda Julia Morgan - Lodi Unified
Kanter, Mitchell..... Victory - Stockton Unified
Kearney, Catherine County Office
Kelley, M. Christie Stockton Unified
Kelly, Pamela..... County Office
Kern, Bruce County Office
King, Wendy..... Manteca Unified
Kirilov, John..... Oakwood - Lodi Unified
Klass, Chuck..... Lincoln Unified
Kleinert, Chris.....Henderson /Community Day - Lodi Unified
Kludt, Sandee..... County Office
Knight, Roy..... Stockton Unified
Koch, Cricket..... Lodi Unified
Kotowski, Lisa Stockton Unified
Kralj, Mark..... Stockton Unified
Kurey, Cathy Lawrence - Lodi Unified
Kushins, Hal.....Tracy Unified

L

Largent, John Escalon Unified
Larson, Mike..... Ripon Elementary - Ripon Unified
Laven, Denise..... H. Clover Middle - Tracy
Lebo, William..... Lammersville
Lee, Robert Manteca Unified
Leffler, Laurie..... Washington - Stockton Unified
Lenz, Susan..... Lincoln Unified
Lepe, Sandra..... Huerta - Stockton Unified
Lewis, Kelly..... Tracy Unified
Lindemann, Bill..... Stockton Unified
Linn-Nieves, Karen County Office
Lipnick, Carolyn Lincoln Unified
Lockwood, Claudia County Office
Lopez, Elsa County Office
Low, Everett Lincoln Unified
Luhn, Scott..... Franklin - Stockton Unified
Luna, Linda..... King - Stockton Unified
Lyons, Michael Stockton Unified

M

Machado, Adrienne..... Montezuma - Stockton Unified
Machado, Alvin..... Holt Union
Machado, Diana Linden Unified
Machado, Gerard Tracy Unified

Malandro, Christine	Lodi Unified
Malandro, Randy	Lodi Unified
Mansfield, Bonnie	Stockton Unified
Mantooth, Dave	Escalon Unified
Markle, Stephanie	Linden High - Linden Unified
Martin, Doug	County Office
Martin, Jonathon	County Office
Martin, Kathy	Lodi Unified
Martin, Wayne	Stockton Unified
Maslyar, William	Poet-Christian - Tracy Unified
Matranga, Mike	Lodi Unified
Matsuoka, Sam	Stockton Unified
McCreary, Greg	San Joaquin Delta College
McFadden, Heidi	County Office
McIntire-Spiegel, Cheryl	Lincoln - Manteca Unified
McKay, Mark	County Office
McKilligan, Mike	Lodi Unified
McKillip, John	Manteca Unified
Medeiros, Diane	Brockman - Manteca Unified
Medeiros, Manuel	Manteca Unified
Medford, Virginia	John Muir - Lodi Unified
Medina, Fred	North - Tracy Unified
Medina, S. Nicolle	San Joaquin - Stockton Unified
Meeker, Cheryl	Manteca Unified
Melara, Adolfo	Stockton Unified
Mello, Richard	Shasta Elementary - Manteca Unified
Mercer, Michelle	Jefferson
Merritt, Grace	County Office
Messer, Jason	Manteca Unified
Metivier, Carol	Jefferson
Moffitt, Susan	Jefferson
Molina, Elena	Community Day- Stockton Unified
Momberg, Knute	Weber Institute - Stockton Unified
Montgomery, Barbara	Earle E. Williams - Tracy Unified
Moore, Evelyn	Manteca Unified
Moran, Cecilia	San Joaquin - Stockton Unified
Morehead, Janis	Lois E. Borchardt- Lodi Unified
Morone, Patti	Ansel Adams - Lodi Unified
Morrow, Lance	Colonial Heights - Lincoln Unified
Mousalimas, James	Tracy Unified
Mueller, Nicholas	County Office
Mullen, Kenneth	Lodi Unified
Munoz, Lindsay	Calla High - Manteca Unified
Munsch, Dale	Lodi Unified
Murray, Judy	Children's Center - Lodi Unified
Myers, Linda	Village Oaks - Lincoln Unified
Myrick, Harriet	Cowell - Manteca Unified

N

Nepote, Claudia	Ripon Unified
Nguyen, Annie	County Office

Nichols-Washer, Catherine Manteca Unified
Nicholas, Kirk Knoles (Tully C.) - Lincoln Unified
Nickols, Deb County Office
Nielson, Shane Lammersville
Nilmeyer, Cheryl Lawrence - Lodi Unified

O

O'Leary, David New Haven - Manteca Unified
O'Neill, James Stockton Unified
Oden, Teresa Grunsky - Stockton Unified
Oechel, Maureen Brookside - Lincoln Unified
Oien, Joanne New Hope
Olmsted, JoAnn Stockton Unified
Oregon, Marrietta County Office
Ortega, Margarito Valenzuela - Stockton Unified
Outlaw, Irene Delta Sierra Middle - Lodi Unified

P

Parises, Dan S. San Joaquin Delta College
Payne, Steve Linden Unified
Pearson, Jeanne Oak View Union
Penn, Julie Stockton Unified
Pennington, Catherine Lodi Unified
Peters, Katie Lathrop Annex - Manteca Unified
Peterson, Ernest River Oaks - Aspire
Petsche, Janet Lincoln Unified
Pettis, Lisa Waverly - Linden Unified
Petz, Chuck New Jerusalem
Pimentel, Tony Linden - Linden Unified
Podesta, Fred III Linden Unified
Potten, Becky August - Stockton Unified
Potten, Garry County Office

Q

Quinn, Ed Jefferson

R

Ramirez, Raul Escalon Unified
Ramos, Hugo Chavez (Cesar) - Stockton Unified
Randrup, Dan County Office
Rausser, Greg Oak View Union
Reese, Madelynne Lodi Unified
Renwanz, Vernon Creekside - Lodi Unified
Richardson, Temeca John R. Williams - Lincoln Unified
Rice, Dorian County Office
Rice, Karen Lincoln Unified

Rios, Katrina	Stockton Unified
Rivas, Carol	Needham - Lodi Unified
Rivas, Robert	Liberty High - Lodi Unified
Rivera, Janet	San Joaquin Delta College
Roberts, Frances	Manteca Unified
Robins, Harvey	Lodi Unified
Robbins, Karen	Stockton Unified
Robledo, Maria Sofia	Stockton Unified
Rocha, Daniel	Banta
Roden, Deborah	Lakewood - Lodi Unified
Rodriguez, Kris	County Office
Rodriguez, Raul	San Joaquin Delta College
Rodriguez, Sandra	Escalon Unified
Rogers, Janet	Wagner-Holt - Lodi Unified
Ruger, Debbie	Brock Elliott - Manteca Unified
Ruley, Yanick	Van Buren - Stockton Unified

S

Sahli, Robert	Stockton Unified
St. George, Margaret	County Office
Salazar, Margaret	Webster Middle - Stockton Unified
Saling, Kit	Harrison - Stockton Unified
Salsedo, Yolanda	Lammersville
Sanders, Susan	French Camp - Manteca Unified
Sandstrom, Erik	Tokay High - Lodi Unified
Sanguinetti, John	Linden Unified
Sasaki, Patty	Westwood - Lodi Unified
Saunders, Bill	Lodi Unified
Schafer, Carla	County Office
Schindler, David	Lodi Unified
Schmiedt, Clara	Weston Ranch High - Manteca Unified
Scholl, Kathryn A.	County Office
Schramm, Ray	Hazelton - Stockton Unified
Schumacher, Janna	Hoover - Stockton Unified
Scott, April	Lincoln High - Lincoln Unified
Scott, Kathy	Lodi Unified
Sears, Jeff	Lincoln Unified
Searway, Robin	Lincoln Unified
Seaton, Shela	County Office
Seeyle, Michael	Manteca Unified
Seifert, Stanley	Oak View Union
Semillo, John	Elmwood - Stockton Unified
Serna, Jess	Stockton Unified
Serna, Maria Elena	San Joaquin Delta College
Serna, Tony	Louis Villalovoz - Tracy Unified
Sexton, Michael	County Office
Shah, Tony	Lincoln High - Lincoln Unified
Shigematsu, Denise	Houston & Turner - Lodi Unified
Shireman, Terry	Ripon Adult - Ripon Unified

Shook, William	Stockton Unified
Sierra, Barbara Jean	Pulliam - Stockton Unified
Silva, Anthony R.	Stockton Unified
Silva, Frank	Banta
Silvano, Robert	Lodi Unified
Simas, Ted	San Joaquin Delta College
Simonich, Don	County Office
Singh, Gurnel	Hamilton - Stockton Unified
Skeels, Kathleen	County Office
Skipton, Fran	Lodi Unified
Slater, Mitchell	Stockton Unified
Small, Ron	Marshall Middle - Stockton Unified
Smith, Kitsy	Vinewood - Lodi Unified
Somera, Tami	Career Education - Lodi Unified
Sonnenburg, Donna	Central - Tracy Unified
Sosa, Olivia	County Office
Sousa, Michael	Garfield - Stockton Unified
Sousa, Steve	Manteca Day - Manteca Unified
Souza, Frank, Jr.	Knodt - Manteca Unified
Spaulding, Jamie	County Office
Springer, Jerry	County Office
Springmeyer, Jane	New Hope
Stanton, Janai	Escalon Unified/County Office
Starr, Mamie	Lodi Unified
Steinhauer, Joan	Komure - Manteca Unified
Steinkamp, Jane	Linden Unified
Stewart, Larry	Ripon Unified
Stewart, Virginia	Tracy Learning Center - Tracy Unified
Stoller, Tami	Stockton Unified
Sun, Warren	Lodi Unified
Sutton, Lynn	County Office
Swartz, Don	Stockton Unified
Swenson, Bill	Tracy Unified

T

Taing, Leanna	Lincoln Unified
Takemoto, Steve	Morada Middle - Lodi Unified
Talbot, Katey	Lincoln Unified
Talley, Gretchen	County Board
Tate, Connie	County Office
Tate, Kelly	County Office
Tatum, Michele	Don Riggio - Lincoln Unified
Tatum, Scott	Lincoln High - Lincoln Unified
Taylor, Dana	Jefferson
Teicheira, Nancy	Manteca Unified
Thacher, Sydney	Roosevelt - Stockton Unified
Thibodeau, Caroline	Manteca Unified
Theil, Mark	County Board
Thomas, James	County Office
Thomasson, Mike	County Office

Thompson, Jeff Middle College High - Lodi Unified
Titus, Clay Linden Unifie
Toledo, Bill Plaza Robles High - Lodi Unified
Toliver, Carl..... Stockton Unified
Tomlin, Cecil..... Stockton Unified
Torres, Andres Model Alternative/Continuation - Stockton Unified
Torres, Jose New Hope
Torres-Peters, Christina..... Stockton Unified
Trantham, Steve Manteca Unified
Traub, Scott.....Morada Lane Secondary - Aspir
Travaille, Carla..... Ripon Unified
Tschetter, Rex Lammersville Charter - Lammersville
Turner, Suzan..... Widmer, Joseph Jr. - Manteca Unified

U

Ubaldi, Gayle County Office
Ulmer, Sylvia Bush - Stockton Unified
Uslan, Tom..... Lincoln Unified

V

Valles, Jose..... Stockton Unified
Valtierra, Danielle..... McKinley - Stockton Unified
Vargo, Melinda..... County Office
Varni, Marianne..... Live Oak - Lodi Unified
Vaughan, James..... Tracy Unified
Vetica, Dawn Lodi Middle - Lodi Unified
Vidal, Charles..... County Office
Vink, Mary..... Delta Charter High School - New Jerusalem

W

Wakefield, Denise Tracy Unified
Wakefield, Jessica Tracy Unified
Wall, Roberta..... Alternative Learning Center - Lodi Unified
Wallace, Bob Escalon Unified
Walser, Telka..... County Office
Walters-Swanson, Cozette..... County Office
Warman, Pam Claudia Landeen - Lincoln Unified
Washburn, Eric..... County Office
Weaver, Bob..... Lodi Unified
Wehrs, Ellen..... Mable Barron - Lincoln Unified
Weinzapfel, Steve..... Banta
Weitz, Rosemary..... Holt Union
Wells, Dan..... Jefferson
Wentworth, Fredrick..... County Office
Whitted, Pam Adams - Stockton Unified
Williams, Phillip..... Linden Unified
Williamson, Greg New Jerusalem

Wilson, Judi County Office
Winder, Barbara County Office
Wingo, Debbie Jefferson
Withycombe, David Ripon Unified
Woods, Leslie Village Oaks - Lincoln Unified
Wright, Daniel Stockton Unified
Wyllie, Eugene Stockton Unified

Y

Yarbrough, Janet Stockton Unified
Yocum, Gary Lodi Unified
Yorba, KT County Office
Young, Neil Lodi Unified

Z

Zuber, Leo M. Ripon Unified

San Joaquin County

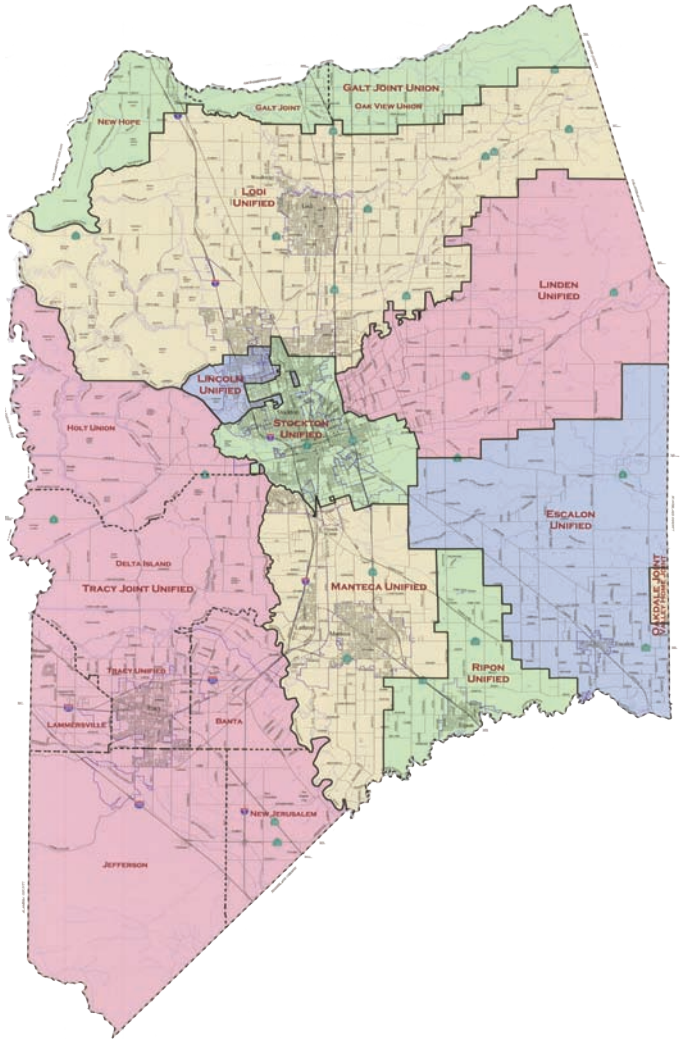
Meeting Dates of Governing Boards

DISTRICT	TIME	DAY OF WEEK
Banta Elementary School District	6:30 p.m.	2 nd Thursday
Escalon Unified School District	7:00 p.m.	1 st and 3 rd Tuesday
Holt Union Elementary School District	7:00 p.m.	1 st Monday
Jefferson Elementary School District	6:30 p.m.	2 nd Tuesday
Lammersville Elementary School District	7:00 p.m.	4 th Tuesday
Lincoln Unified School District	7:30 p.m.	2 nd and 4 th Wednesday (with exceptions)
Linden Unified School District	7:00 p.m.	3 rd Wednesday
Lodi Unified School District	7:00 p.m.	1 st and 3 rd Tuesday
Manteca Unified School District	7:00 p.m.	Tuesday (every three weeks)
New Hope Elementary School District	7:00 p.m.	3 rd Monday
New Jerusalem Elementary School District	5:30 p.m.	2 nd Tuesday
Oak View Union Elementary School District	7:30 p.m.	3 rd Thursday
Ripon Unified School District	7:00 p.m.	2 nd Monday
San Joaquin County Board of Education	12:00 p.m.	3 rd Wednesday
San Joaquin Delta Community College District	7:30 p.m.	1 st and 3 rd Tuesday
Stockton Unified School District	7:00 p.m.	2 nd and 4 th Tuesday
Tracy Unified School District	7:00 p.m.	2 nd and 4 th Tuesday

San Joaquin County Meeting Dates of Governing Boards

DISTRICT	TIME	DAY OF WEEK
Banta Elementary School District	6:30 p.m.	2 nd Thursday
Escalon Unified School District	7:00 p.m.	1 st and 3 rd Tuesday
Holt Union Elementary School District	7:00 p.m.	1 st Monday
Jefferson Elementary School District	6:30 p.m.	2 nd Tuesday
Lammersville Elementary School District	7:00 p.m.	4 th Tuesday
Lincoln Unified School District	7:30 p.m.	2 nd and 4 th Wednesday (with exceptions)
Linden Unified School District	7:00 p.m.	3 rd Wednesday
Lodi Unified School District	7:00 p.m.	1 st and 3 rd Tuesday
Manteca Unified School District	7:00 p.m.	Tuesday (every three weeks)
New Hope Elementary School District	7:00 p.m.	3 rd Monday
New Jerusalem Elementary School District	5:30 p.m.	2 nd Tuesday
Oak View Union Elementary School District	7:30 p.m.	3 rd Thursday
Ripon Unified School District	7:00 p.m.	2 nd Monday
San Joaquin County Board of Education	12:00 p.m.	3 rd Wednesday
San Joaquin Delta Community College District	7:30 p.m.	1 st and 3 rd Tuesday
Stockton Unified School District	7:00 p.m.	2 nd and 4 th Tuesday
Tracy Unified School District	7:00 p.m.	2 nd and 4 th Tuesday

San Joaquin County Public Schools Directory 2005-2006



Non Profit Orgn.
U.S. Postage
PAID
Stockton, Calif.
Permit No. 681



S J C O E

Published by:
Public Information Office,
San Joaquin County Office of Education
2901 Arch-Airport Road
P.O. Box 213030
Stockton, CA 95213-9030

<http://www.sjcoe.org>